

\$2,400,000 - 620 Wayside Drive, Wimberley

MLS® #9764869

\$2,400,000

0 Bedroom, 0.00 Bathroom,
Commercial on 14.59 Acres

Canyon Oaks, Wimberley, TX

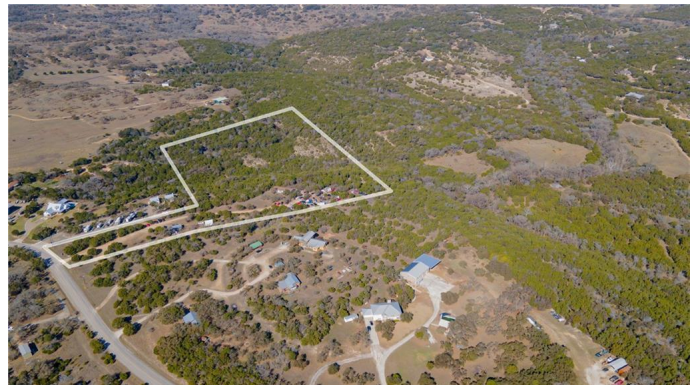
Very rare Wimberley development opportunity.

Lot 6, Canyon Oaks. 14.59 acres of unrestricted property. 7.59 acres of level land with 7 acres as part of a private canyon with a very steep drop off down to a wet weather creek. Heavily treed with Oaks and Cedar. 750 feet of canyon rim with beautiful views and western sunset exposure. Wimberley Extra Territorial Jurisdiction (ETJ). Includes 1995 2175 SF 4 bedroom 2 bath manufactured home with large front deck, large covered rear deck, above ground pool and 5 storage buildings. Caliche driveway. Fully fenced. Seller is a licensed real estate broker. Joint Venture & Owner Financing Available. Residential water meter is in place to service 2 homes. Commercial water meter is available with Wimberley Water to service any of the development opportunities listed below “ Approximately \$50,000 to install. Existing septic system for 2 homes. Grandfathered in Hays County septic system capacity to service any of the development opportunities listed below.

1. Single Family Estate Home Site “ Site Built, Modular Home, Barndominium.

2. 15 Single Family Homes (4 bedrooms)
Less than 3,500 SF per Unit.

3. 18 Unit Townhome or Condominium
Complex (3 bedrooms) Less than 2,500 SF
per Unit.



4. 24 Unit Townhome or Condominium Complex (2 bedrooms) Less than 1,500 SF per Unit.
5. 24 Unit Tiny Home Land Condominium Complex with retail sale or rental (B&B) of Tiny Homes.
6. 18 Unit Manufactured Home Park (3 bedrooms) less than 2,500 SF per Unit w/ retail sale or rental.
7. 21 Unit Apartment Complex (2 bedrooms).
8. 43 Unit Apartment Complex (1 bedroom).
9. 36 Unit Motel or Bed & Breakfast (2 beds per room).
10. 72 Unit Motel or Bed & Breakfast (1 bed per room).
11. 109 Unit RV Rental Park.
12. 24 Unit (1200 Weeks) Condominium Timeshare (2 bedrooms) Less than 1,500 SF per Unit.

Built in 1998

Essential Information

MLS® #	9764869
Price	\$2,400,000
Bathrooms	0.00
Acres	14.59
Year Built	1998
Type	Commercial
Sub-Type	Other
Status	Active

Community Information

Address	620 Wayside Drive
Subdivision	Canyon Oaks
City	Wimberley
County	Hays
State	TX
Zip Code	78676

Amenities

Utilities	Cable Available, Cable Connected, Electricity Connected, High Speed Internet Available, Phone Connected, Underground Utilities, Water Connected
Parking	Outside
View	Canyon, Hills, Panoramic, Creek/Stream, Trees/Woods

Interior

Interior	Carpet, Vinyl
Heating	Central, Electric, Fireplace(s), Hot Water

Exterior

Construction	Vinyl Siding
Foundation	Pillar/Post/Pier

Additional Information

Zoning	None
--------	------

Property Listed by: Sundance Homes & RealtyThe information being provided is for consumers' personal, non-commercial use and may not be used for any purpose other than to identify prospective properties consumers may be interested in purchasing. Based on information from the Austin Board of REALTORS® (alternatively, from ACTRIS) from September 10th, 2021 at 4:01pm CDT. Neither the Board nor ACTRIS guarantees or is in any way responsible for its accuracy. The Austin Board of REALTORS®, ACTRIS and their affiliates provide the MLS and all content therein "AS IS" and without any warranty, express or implied. Data maintained by the Board or ACTRIS may not reflect all real estate activity in the market. All information provided is deemed reliable but is not guaranteed and should be independently verified.