

\$360,839 - 310 Evening Star, Kyle

MLS® #8008116

\$360,839

4 Bedroom, 2.00 Bathroom, 2,287 sqft
Residential on 0.16 Acres

Woodlands Park Ph 1, Kyle, TX

A quiet neighborhood. This house is one of the largest, single-story homes in the neighborhood. Large, covered patio. Large storage shed in back. There are four bedrooms, with the front room that can be multifunctional as a guest room, TV room, workout room, or work from home office. All rooms wired for comm and a/v. Growing new infrastructure, with major grocery, home centers, and a new Costco under construction—all within a few min of drive time.

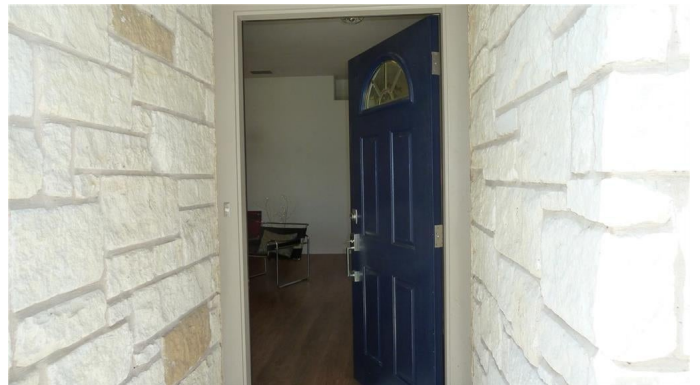
Built in 2004

Essential Information

MLS® #	8008116
Price	\$360,839
Bedrooms	4
Bathrooms	2.00
Full Baths	2
Square Footage	2,287
Acres	0.16
Year Built	2004
Type	Residential
Sub-Type	Single Family Residence
Status	Active

Community Information

Address	310 Evening Star
Subdivision	Woodlands Park Ph 1



City	Kyle
County	Hays
State	TX
Zip Code	78640

Amenities

Utilities	Cable Available, Cable Connected, Electricity Connected, Natural Gas Connected, High Speed Internet Available, Phone Available, Sewer Connected, Water Connected, Underground Utilities, Other
Features	Common Grounds/Area, Community Mailbox, Playground
Parking	Garage Faces Front, Garage, Private, Enclosed, Inside Entrance
# of Garages	2
Garages	Garage Door Opener
View	Neighborhood, Trees/Woods
Waterfront	None

Interior

Interior	Carpet, Laminate
Appliances	Dishwasher, Exhaust Fan, Gas Cooktop, Disposal, Plumbed For Ice Maker, Refrigerator, Self Cleaning Oven, Vented Exhaust Fan, Range
Heating	Central, Fireplace(s), Natural Gas
# of Fireplaces	1
Fireplaces	Living Room, Stone, Wood Burning
# of Stories	1
Stories	One

Exterior

Exterior Features	Lighting
Lot Description	Landscaped, Moderate Trees, Trees Medium Size
Roof	Composition
Construction	Frame, HardiPlank Type, Masonry, Stone, Stone Veneer
Foundation	Slab

School Information

District	Hays ISD
Elementary	Tobias
Middle	Laura B Wallace
High	Lehman

Property Listed by: Classic RealtyThe information being provided is for consumers' personal, non-commercial use and

may not be used for any purpose other than to identify prospective properties consumers may be interested in purchasing. Based on information from the Austin Board of REALTORS® (alternatively, from ACTRIS) from September 11th, 2021 at 12:15am CDT. Neither the Board nor ACTRIS guarantees or is in any way responsible for its accuracy. The Austin Board of REALTORS®, ACTRIS and their affiliates provide the MLS and all content therein "AS IS" and without any warranty, express or implied. Data maintained by the Board or ACTRIS may not reflect all real estate activity in the market. All information provided is deemed reliable but is not guaranteed and should be independently verified.