

\$390,000 - 620 Emma Rose Trail, Leander

MLS® #7682345

\$390,000

4 Bedroom, 3.00 Bathroom, 2,104 sqft
Residential on 0.13 Acres

Westview Meadows Ph 04, Leander, TX

2 story single family property. 2 car garage with 4 available parking spaces in the driveway. Both the front and backyard have a covered porch. The backyard comes with a grill and a secondary patio made of brick. The house itself has 4 full bedrooms, only the ground level bedroom is without a walk in closet. There are 3 full bathrooms, the primary having a dual vanity and being with the primary bedroom upstairs. The dining area has a chandelier and there are 2 full living rooms, one on each floor. Laundry room is upstairs adjacent to the non-primary bathroom.

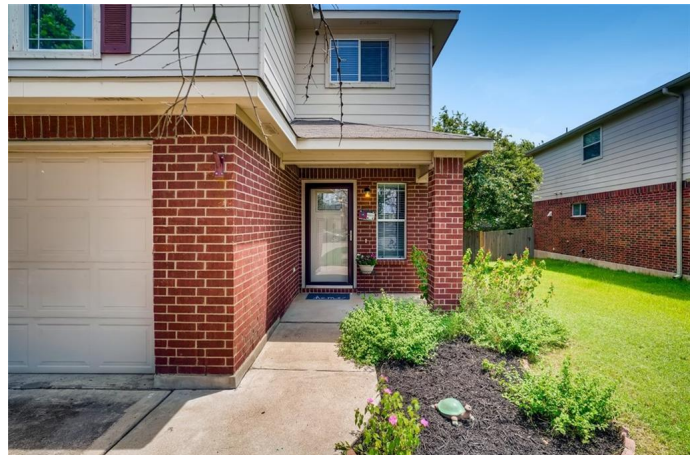
Built in 2008

Essential Information

MLS® #	7682345
Price	\$390,000
Bedrooms	4
Bathrooms	3.00
Full Baths	3
Square Footage	2,104
Acres	0.13
Year Built	2008
Type	Residential
Sub-Type	Single Family Residence
Status	Active

Community Information

Address 620 Emma Rose Trail



Subdivision	Westview Meadows Ph 04
City	Leander
County	Williamson
State	TX
Zip Code	78641

Amenities

Utilities	Cable Available, Electricity Available, Phone Available, High Speed Internet Available, Other
Features	Common Grounds/Area, Community Mailbox, Playground, Pool, Curbs, Dog Park
Parking	Attached, Driveway, Garage Faces Front, Garage, Direct Access, Inside Entrance, Paved
# of Garages	2
Garages	Garage Door Opener
View	Park/Greenbelt
Waterfront	None

Interior

Interior	Carpet, Tile, Wood, Linoleum
Appliances	Dryer, Dishwasher, Free-Standing Refrigerator, Disposal, Microwave, Washer, Electric Water Heater, ENERGY STAR Qualified Appliances, ENERGY STAR Qualified Dishwasher, ENERGY STAR Qualified Dryer, ENERGY STAR Qualified Freezer, ENERGY STAR Qualified Refrigerator, ENERGY STAR Qualified Washer, Free-Standing Electric Oven, Free-Standing Freezer, Ice Maker, Self Cleaning Oven
Heating	Central
Fireplaces	None
# of Stories	2
Stories	Two

Exterior

Exterior Features	Lighting, Private Yard, Gas Grill
Lot Description	Back Yard, Front Yard, Moderate Trees, Cul-De-Sac, Trees Medium Size
Roof	Asphalt, Shingle
Construction	Brick Veneer, Wood Siding
Foundation	Slab

School Information

District	Leander ISD
Elementary	Jim Plain
Middle	Leander Middle
High	Glenn

Property Listed by: Berkshire Hathaway TX RealtyThe information being provided is for consumers' personal, non-commercial use and may not be used for any purpose other than to identify prospective properties consumers may be interested in purchasing. Based on information from the Austin Board of REALTORS® (alternatively, from ACTRIS) from September 10th, 2021 at 4:01pm CDT. Neither the Board nor ACTRIS guarantees or is in any way responsible for its accuracy. The Austin Board of REALTORS®, ACTRIS and their affiliates provide the MLS and all content therein "AS IS" and without any warranty, express or implied. Data maintained by the Board or ACTRIS may not reflect all real estate activity in the market. All information provided is deemed reliable but is not guaranteed and should be independently verified.