

# \$350,000 - 11525 Glen Knoll Drive, Manor

MLS® #7474383

## \$350,000

3 Bedroom, 2.00 Bathroom, 2,012 sqft  
Residential on 0.17 Acres

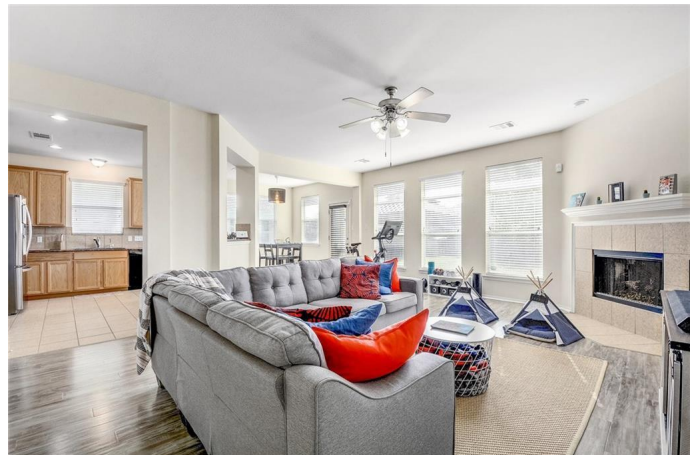
Shadowglen Ph 01 Sec 07, Manor, TX

If multiple offers are received, the MLS will be updated to reflect this and the deadline for offers will be Sunday 9/12 at noon. NO SHOWINGS SUNDAY 9/13 PLEASE DO NOT ASK. Adorable one-story home in the award winning ShadowGlen subdivision. This charming floor plan offers a large living room, formal dining room, an eat in kitchen and an office with glass French doors. Large owners' suite in the back of the house is nicely separated from the secondary rooms. Large kitchen with pantry and breakfast bar opens to living room and gas fireplace. Granite counter tops in kitchen and bathrooms. Rooms are spacious and flow nicely. Private backyard with large gazebo that will convey. This home is located within walking distance to the awesome neighborhood pool and amenities. The ShadowGlen neighborhood is a golf course community and offers an elementary school, community center, planned activities, playgrounds, walking trails and more. Convenient access to the 130 and 290 toll roads, airport, shopping and major employers like 3M, Apple, Dell, GM, Samsung and the Tesla Gigafactory.

Built in 2006

## Essential Information

MLS® #	7474383
Price	\$350,000



Bedrooms	3
Bathrooms	2.00
Full Baths	2
Square Footage	2,012
Acres	0.17
Year Built	2006
Type	Residential
Sub-Type	Single Family Residence
Status	Active

### Open Houses

Date/Time	Wed Dec 31st, 1:00-3:00PM
-----------	---------------------------

### Community Information

Address	11525 Glen Knoll Drive
Subdivision	Shadowglen Ph 01 Sec 07
City	Manor
County	Travis
State	TX
Zip Code	78653

### Amenities

Utilities	Cable Available, Electricity Connected, Natural Gas Connected, High Speed Internet Available, Phone Available, Sewer Connected, Water Connected
Features	Clubhouse, Community Mailbox, Fitness Center, Golf, Playground, Pool, Planned Social Activities, Trails/Paths, Curbs, Internet Access
Parking	Attached, Door-Single, Garage Faces Front, Garage
# of Garages	2
Garages	Garage Door Opener
View	None
Waterfront	None

### Interior

Interior	Carpet, Tile, Vinyl
Appliances	Built-In Oven, Dishwasher, Exhaust Fan, Gas Cooktop, Disposal, Gas Water Heater, Microwave, Oven, Water Softener Owned, Down Draft
Heating	Central, Natural Gas
# of Fireplaces	1

Fireplaces	Gas Log, Living Room
# of Stories	1
Stories	One

## Exterior

Exterior Features	Private Yard, Rain Gutters
Lot Description	Back Yard, Interior Lot, Level, Moderate Trees, Trees Medium Size
Roof	Composition
Construction	Brick Veneer, HardiPlank Type, Masonry
Foundation	Slab

## School Information

District	Manor ISD
Elementary	ShadowGlen
Middle	Manor (Manor ISD)
High	Manor

Property Listed by: Let's Move Austin LLC  
The information being provided is for consumers' personal, non-commercial use and may not be used for any purpose other than to identify prospective properties consumers may be interested in purchasing. Based on information from the Austin Board of REALTORS® (alternatively, from ACTRIS) from September 10th, 2021 at 4:36pm CDT. Neither the Board nor ACTRIS guarantees or is in any way responsible for its accuracy. The Austin Board of REALTORS®, ACTRIS and their affiliates provide the MLS and all content therein "AS IS" and without any warranty, express or implied. Data maintained by the Board or ACTRIS may not reflect all real estate activity in the market. All information provided is deemed reliable but is not guaranteed and should be independently verified.