

\$10,999,000 - Tbd Crabapple Road, Blanco

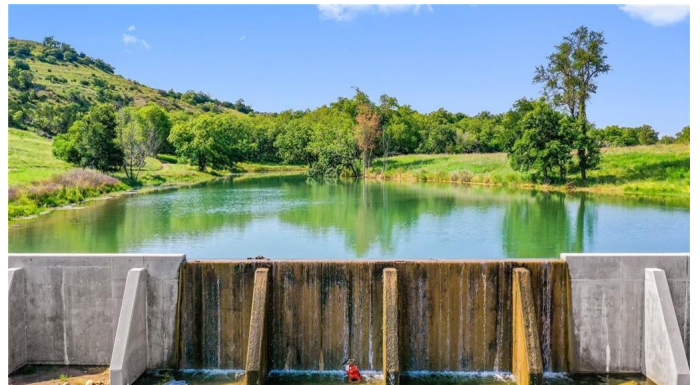
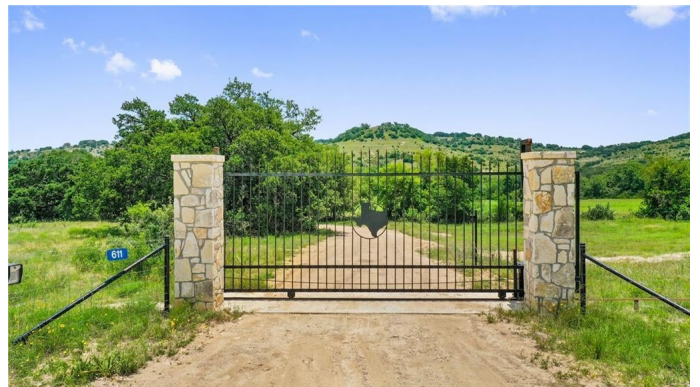
MLS® #6780340

\$10,999,000

0 Bedroom, 0.00 Bathroom,
Farm on 514.00 Acres

N/A, Blanco, TX

Sotol Ranch South consists of 514+/- Acres and lies in scenic Blanco and Kendall County, minutes from downtown Blanco. This is some of the finest real estate the Texas Hill Country has to offer. A crown jewel in one of the most sought out rural real estate regions in the world. The ranch boasts majestic hilltops with 1850-ft elevations in multiple locations. The ranch offers approx. 1100 ft of beautiful Crabapple Creek. As a bonus there is also a newly constructed lake on the middle portion of the ranch and a 1200-ft concrete spillway is constructed at the center of this creek and is 9 feet deep at the pool. This body of water has over 2 acres of water and is one of the only sizeable concrete water impoundments along Crabapple creek that has a reliable year around spring fed creek. There is a concrete crossing at the creek that ensure all weather access across the creek. Access to the ranch is great with over 1200 ft. of frontage on paved Crabapple Rd. The wildlife on the ranch is abundant and includes a great whitetail herd, Axis Deer, Turkey, Ducks, and Dove. The Lake water feature is stocked with Bass and Catfish and is loaded with multiple types and sizes of baitfish. The fences on the ranch are in great shape. Several miles of secondary roads provide access to many secluded areas and give the ranch outstanding accessibility. This is a phenomenal ranch located in one of the fastest growing areas in the USA.



Essential Information

MLS® #	6780340
Price	\$10,999,000
Bathrooms	0.00
Acres	514.00
Type	Farm
Sub-Type	Ranch
Status	Active

Community Information

Address	Tbd Crabapple Road
Subdivision	N/A
City	Blanco
County	Blanco
State	TX
Zip Code	78606

Amenities

Utilities	See Remarks
View	Hills, Panoramic
Is Waterfront	Yes
Waterfront	Creek, Pond, See Remarks, Lake Front, Seasonal, Waterfront

Exterior

Lot Description	Agricultural, Native Plants, Many Trees, Views, Wetlands
-----------------	--

School Information

District	Blanco ISD
Elementary	Blanco
Middle	Blanco
High	Blanco

Property Listed by: Topper Real EstateThe information being provided is for consumers' personal, non-commercial use and may not be used for any purpose other than to identify prospective properties consumers may be interested in purchasing. Based on information from the Austin Board of REALTORS® (alternatively, from ACTRIS) from September 10th, 2021 at 11:16pm CDT. Neither the Board nor ACTRIS guarantees or is in any way responsible for its accuracy. The Austin Board of REALTORS®, ACTRIS and their affiliates provide the MLS and all content therein "AS IS" and without any warranty, express or implied. Data maintained by the Board or ACTRIS may not reflect all real estate activity in the market. All information provided is deemed reliable but is not guaranteed and should be independently verified.