

# \$493,962 - 2909 Sudha Drive, Austin

MLS® #6663788

## \$493,962

3 Bedroom, 3.00 Bathroom, 1,987 sqft  
Residential on 0.09 Acres

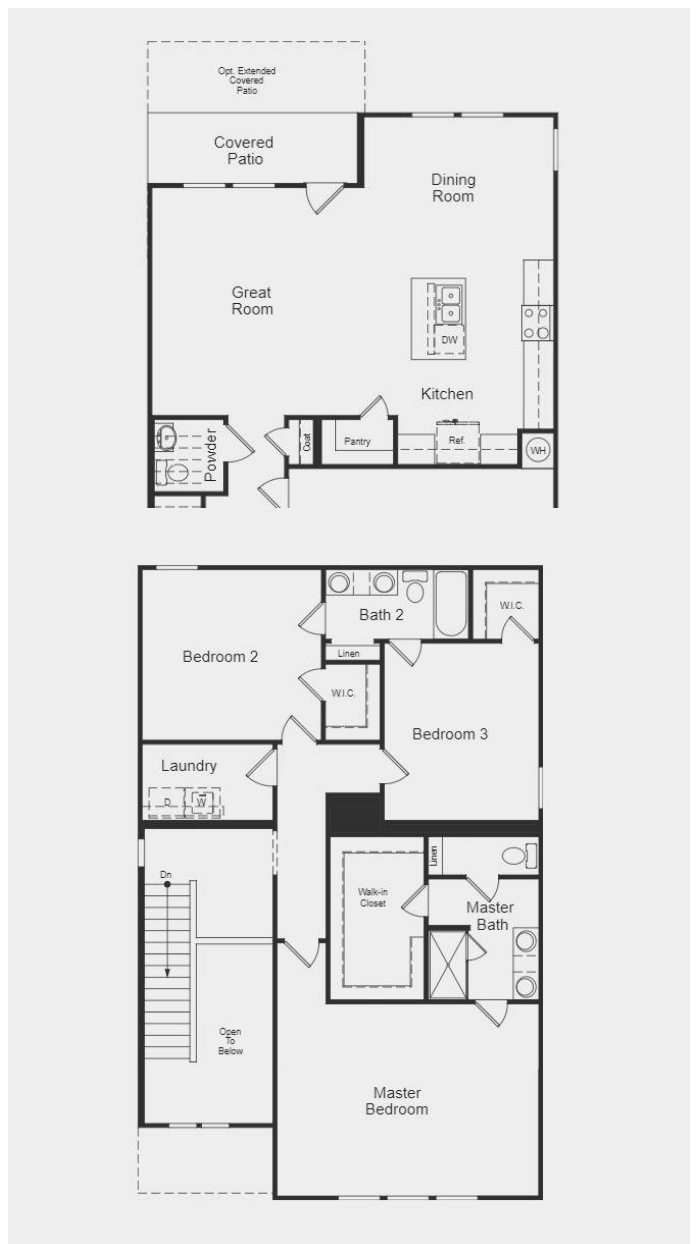
Bratton Hill, Austin, TX

Encore D by Taylor Morrison ~ Ready October 2021! Upon entering, experience a gallery entry with two-story volume ceiling. This open-concept plan connects the Great Room to a spacious kitchen and dining room. Enjoy cooking and entertaining in this contemporary kitchen with Stainless Steel appliances, island with single-basin sink and pantry with plentiful shelving. Upstairs, a spacious Master Suite includes a generous walk-in closet, bath with dual vanities, enclosed water closet and linen storage. The two secondary bedrooms feature walk-in closets and share a full bath with linen storage. A large second-floor laundry room offers convenient shelving for storage. A 2-car garage completes this home. Design upgrades include: upgraded flooring, backsplash, interior doors, cabinet pull, turnkey open rail iron baluster. This home also features MERV 13 air filter, aquasana 3 stage max flow water filter at kitchen sink, broan surfact shield anti-bacterial exhaust fan in bathroom and low VOC paint!

Built in 2021

## Essential Information

MLS® #	6663788
Price	\$493,962
Bedrooms	3
Bathrooms	3.00
Full Baths	2



Half Baths	1
Square Footage	1,987
Acres	0.09
Year Built	2021
Type	Residential
Sub-Type	Condominium
Status	Active

### Community Information

Address	2909 Sudha Drive
Subdivision	Bratton Hill
City	Austin
County	Travis
State	TX
Zip Code	78728

### Amenities

Utilities	Cable Available, Natural Gas Available, High Speed Internet Available, Sewer Available, Underground Utilities
Features	Community Mailbox
Parking	Garage
# of Garages	2
Garages	Garage Door Opener
View	Neighborhood
Waterfront	None

### Interior

Interior	Carpet, Tile, Wood
Appliances	Gas Oven, Gas Range, Gas Water Heater, Stainless Steel Appliance(s), Vented Exhaust Fan
Heating	ENERGY STAR Qualified Equipment, Natural Gas, Zoned
# of Stories	2
Stories	Two

### Exterior

Lot Description	Corner Lot
Roof	Shingle
Construction	HardiPlank Type
Foundation	Slab

**School Information**

District	Round Rock ISD
Elementary	Joe Lee Johnson
Middle	Deerpark
High	McNeil

Property Listed by: Alexander PropertiesThe information being provided is for consumers' personal, non-commercial use and may not be used for any purpose other than to identify prospective properties consumers may be interested in purchasing. Based on information from the Austin Board of REALTORS® (alternatively, from ACTRIS) from September 10th, 2021 at 3:36pm CDT. Neither the Board nor ACTRIS guarantees or is in any way responsible for its accuracy. The Austin Board of REALTORS®, ACTRIS and their affiliates provide the MLS and all content therein "AS IS" and without any warranty, express or implied. Data maintained by the Board or ACTRIS may not reflect all real estate activity in the market. All information provided is deemed reliable but is not guaranteed and should be independently verified.