

\$359,900 - 2170 Intrepid Drive, Buda

MLS® #6567212

\$359,900

3 Bedroom, 2.00 Bathroom, 1,790 sqft
Residential on 0.20 Acres

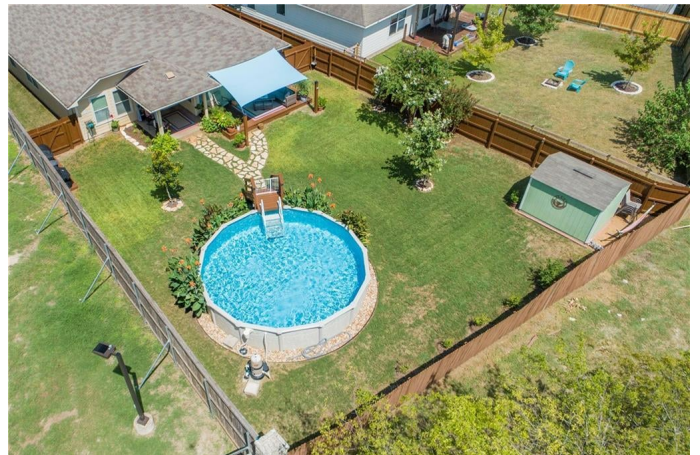
Meadow Park Sec 1a, Buda, TX

Immaculate one-story home in Buda in a great location convenient to restaurants, shopping, and medical facilities. This well-maintained home offers 3 bedrooms and 2 full baths, open floor concept by Buffington featuring hard tile in areas and carpet in bedrooms, 9â€™™ ceilings, and ceiling fans in all bedrooms. Large kitchen area opens to family room and dining area with granite countertops and lots counter and cabinets space. Stainless steel appliances, recess lighting, and fridge to convey. Private backyard with 21â€™™ round above ground pool that has been very well maintained for your hot Texas summer days. Extended deck 10â€™™ x 20â€™™ off covered patio with sunshade cover is great for entertaining and relaxing. 10â€™™ x 10â€™™ storage shed, sprinklers, full gutters, and water softener.

Built in 2012

Essential Information

MLS® #	6567212
Price	\$359,900
Bedrooms	3
Bathrooms	2.00
Full Baths	2
Square Footage	1,790
Acres	0.20
Year Built	2012



Type	Residential
Sub-Type	Single Family Residence
Status	Active Under Contract

Community Information

Address	2170 Intrepid Drive
Subdivision	Meadow Park Sec 1a
City	Buda
County	Hays
State	TX
Zip Code	78610

Amenities

Utilities	Water Connected, Underground Utilities, Electricity Connected, Natural Gas Connected, Sewer Connected
Features	Common Grounds/Area, Community Mailbox, Playground, Curbs
Parking	Attached, Garage, Concrete, Door-Single, Garage Faces Front
# of Garages	2
Garages	Garage Door Opener
View	Neighborhood
Waterfront	None

Interior

Interior	Carpet, Tile
Appliances	Dishwasher, Disposal, Microwave, Refrigerator, Free-Standing Gas Range, Gas Water Heater, Plumbed For Ice Maker, Water Softener Owned
Heating	Central, Natural Gas
# of Fireplaces	1
Fireplaces	Insert, Living Room
# of Stories	1
Stories	One

Exterior

Exterior Features	Rain Gutters
Lot Description	Sprinklers Automatic, Level, Sprinklers In Front, Sprinklers In Rear, Sprinklers On Side, Trees Small Size
Roof	Composition, Shingle
Construction	Brick, Blown-In Insulation, HardiPlank Type

Foundation Slab

School Information

District Hays ISD
Elementary Tom Green
Middle McCormick
High Johnson High School

Property Listed by: United Real Estate AustinThe information being provided is for consumers' personal, non-commercial use and may not be used for any purpose other than to identify prospective properties consumers may be interested in purchasing. Based on information from the Austin Board of REALTORS® (alternatively, from ACTRIS) from September 10th, 2021 at 5:01pm CDT. Neither the Board nor ACTRIS guarantees or is in any way responsible for its accuracy. The Austin Board of REALTORS®, ACTRIS and their affiliates provide the MLS and all content therein "AS IS" and without any warranty, express or implied. Data maintained by the Board or ACTRIS may not reflect all real estate activity in the market. All information provided is deemed reliable but is not guaranteed and should be independently verified.