

\$298,000 - 620 N Kirtley Road, Smithville

MLS® #6326666

\$298,000

0 Bedroom, 0.00 Bathroom,
Farm on 21.66 Acres

Barton, Smithville, TX

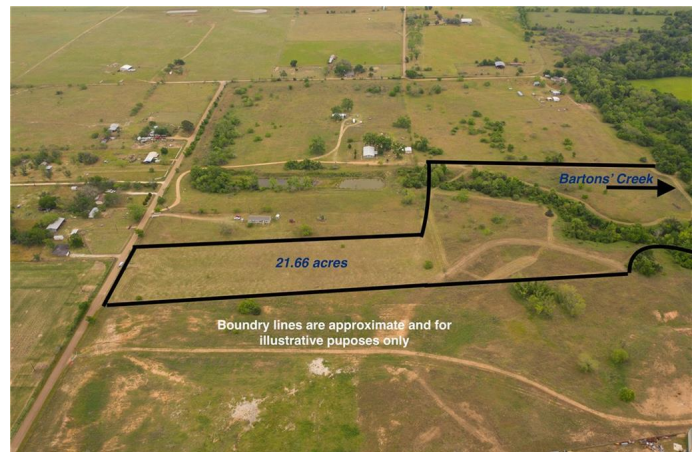
Exceptional Deal!! Ideally located just off of Highway 71 outside of Smithville and only an hour from Austin, this special property offers many possibilities for ranch, recreation or even light industrial uses. A unique feature of the tract is the abundant water supply. Barton's Creek forms the eastern boundary of the track and a second creek fed by a natural spring separates the two coastal pastures. Both have water year round and attract a variety of wildlife including deer, small game, beaver, water fowl and migratory birds. Native plant species include pecan, oak, sycamore, elm, cedar, dewberries and countless other flowering plants. The land is currently ag-exempt and was once part of the historic Primm farm. Enjoy exceptional practical and recreational values while experiencing the sights and sound of this Central Texas land.

Essential Information

| | |
|-----------|-----------|
| MLS® # | 6326666 |
| Price | \$298,000 |
| Bathrooms | 0.00 |
| Acres | 21.66 |
| Type | Farm |
| Sub-Type | Ranch |
| Status | Active |

Community Information

| | |
|---------|--------------------|
| Address | 620 N Kirtley Road |
|---------|--------------------|



| | |
|-------------|------------|
| Subdivision | Barton |
| City | Smithville |
| County | Fayette |
| State | TX |
| Zip Code | 78957-5010 |

Amenities

| | |
|------------|----------------------------------|
| Utilities | See Remarks, Sewer Not Available |
| View | Pasture, Creek/Stream |
| Waterfront | Creek, See Remarks |

Exterior

| | |
|-----------------|--|
| Lot Description | Native Plants, Trees Large Size, Trees Medium Size |
|-----------------|--|

School Information

| | |
|------------|----------------|
| District | Smithville ISD |
| Elementary | Smithville |
| Middle | Smithville |
| High | Smithville |

Property Listed by: Austin Real Pros, REALTORSThe information being provided is for consumers' personal, non-commercial use and may not be used for any purpose other than to identify prospective properties consumers may be interested in purchasing. Based on information from the Austin Board of REALTORS® (alternatively, from ACTRIS) from September 11th, 2021 at 8:30pm CDT. Neither the Board nor ACTRIS guarantees or is in any way responsible for its accuracy. The Austin Board of REALTORS®, ACTRIS and their affiliates provide the MLS and all content therein "AS IS" and without any warranty, express or implied. Data maintained by the Board or ACTRIS may not reflect all real estate activity in the market. All information provided is deemed reliable but is not guaranteed and should be independently verified.