

\$999,702 - Fm 150, Kyle

MLS® #6126134

\$999,702

0 Bedroom, 0.00 Bathroom,
Commercial on 1.85 Acres

Panther Park Sec Two, Kyle, TX

214.23' of commercial frontage on Hwy 150.
High traffic count between Dollar General and
Veterinarian Office.

Essential Information

MLS® #	6126134
Price	\$999,702
Bathrooms	0.00
Acres	1.85
Type	Commercial
Sub-Type	Other
Status	Active

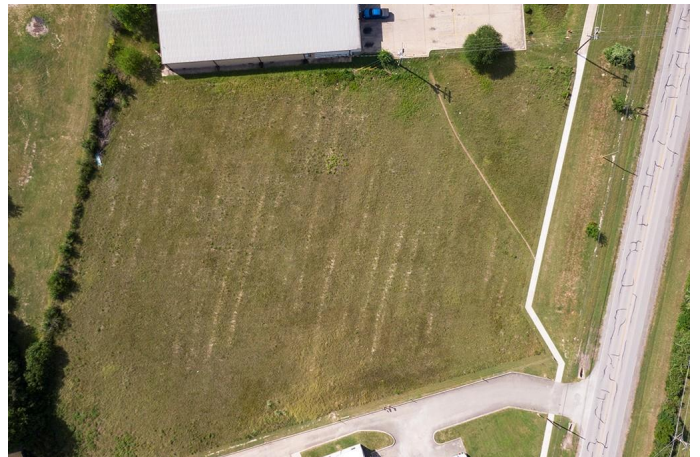
Community Information

Address	Fm 150
Subdivision	Panther Park Sec Two
City	Kyle
County	Hays
State	TX
Zip Code	78640

Amenities

Utilities	Above Ground Utilities, Sewer Available, Water Available
Parking	None

Property Listed by: Coldwell Banker D'Ann HarperThe information being provided is for consumers' personal, non-commercial use and may not be used for any purpose other than to identify prospective properties consumers may be interested in purchasing. Based on information from the Austin Board of REALTORS® (alternatively, from ACTRIS) from September 10th, 2021 at 6:16pm CDT. Neither the Board nor ACTRIS guarantees or is in any way responsible for its accuracy. The Austin Board of REALTORS®, ACTRIS and their affiliates provide the MLS and all content therein "AS IS" and without any warranty, express or implied. Data maintained by the Board or ACTRIS may not reflect all real



estate activity in the market. All information provided is deemed reliable but is not guaranteed and should be independently verified.