

\$495,000 - 1207 Timber Bend Drive, Pflugerville

MLS® #4961069

\$495,000

4 Bedroom, 3.00 Bathroom, 2,898 sqft
Residential on 0.21 Acres

Katymead Sec 01, Pflugerville, TX

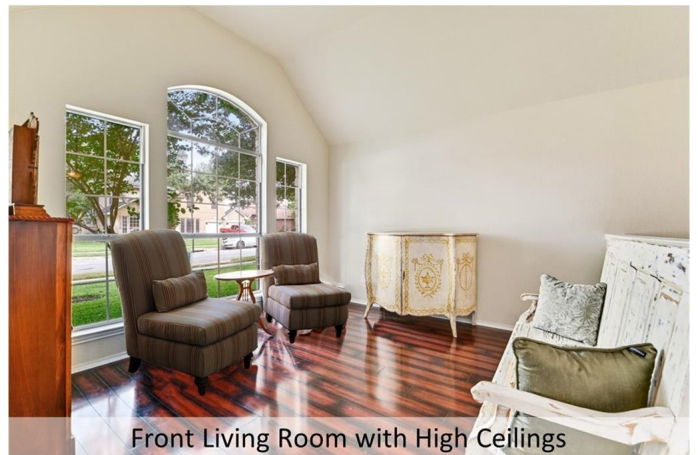
Don't miss this opportunity! Fabulous large, single story floorplan with so much flexibility. Great for multiple generations, roommates, and/or families with 3 wings each with privacy and separate full bathroom. The primary suite wing is expansive and private with 2 rooms plus the oversized bathroom and fabulous storage areas. The French doors allow abundant light and quick access to the back yard. The recently remodeled en-suite bath features an over-sized walk-in shower and soaker tub and leads to the bonus room (with closet) which has direct access from the garage – perfect for an office, exercise room, nursery, or 5th bedroom. The second wing includes 2 bedrooms plus another remodeled bath and can be closed off with a lovely barn door. The front wing includes a separate guest suite with private bath. The large central kitchen boasts a stone accent wall and center island with skylight plus plenty of counter and cabinet space. The front living area and formal dining welcome you with high ceilings into this lovely home. Custom double doors open to a expansive family room with fireplace. This room also opens to the lovely backyard oasis! Recent improvements include: roof and gutters, exterior paint and landscape refresh, 50 gallon hot water heater, flooring, some interior paint and remodeled or updated baths. Enjoy the close-in Pflugerville location. Convenient access to all major thoroughfares, numerous shopping, entertainment and recreational opportunities and



Welcome Home to 1207 Timber Bend Dr.



Beautiful Mature Trees



Front Living Room with High Ceilings

across-the-street access to more than 40 miles of inter-connected hike and bike trails and numerous parks.

Built in 1992

Essential Information

MLS® #	4961069
Price	\$495,000
Bedrooms	4
Bathrooms	3.00
Full Baths	3
Square Footage	2,898
Acres	0.21
Year Built	1992
Type	Residential
Sub-Type	Single Family Residence
Status	Active

Community Information

Address	1207 Timber Bend Drive
Subdivision	Katymead Sec 01
City	Pflugerville
County	Travis
State	TX
Zip Code	78660

Amenities

Utilities	Cable Available, Electricity Connected, Natural Gas Connected, High Speed Internet Available, Phone Available, Sewer Connected, Underground Utilities, Water Connected
Features	Trails/Paths
Parking	Garage Faces Front, Garage
# of Garages	2
Garages	Garage Door Opener
View	Park/Greenbelt
Waterfront	None

Interior

Interior	Carpet, Laminate, Tile, Vinyl
Appliances	Dishwasher, Exhaust Fan, Disposal, Gas Range, Gas Water Heater, Microwave, Plumbed For Ice Maker, Refrigerator, Range Hood, Water Softener Owned
Heating	Central
# of Fireplaces	1
Fireplaces	Gas, Gas Log, Living Room, Masonry, Raised Hearth
# of Stories	1
Stories	One

Exterior

Exterior Features	Garden, Rain Gutters
Lot Description	Back Yard, Many Trees, Trees Medium Size, Trees Small Size
Roof	Composition
Construction	Stone Veneer
Foundation	Slab

School Information

District	Pflugerville ISD
Elementary	Brookhollow
Middle	Park Crest
High	Pflugerville

Property Listed by: Friedrich Realty LLC
The information being provided is for consumers' personal, non-commercial use and may not be used for any purpose other than to identify prospective properties consumers may be interested in purchasing. Based on information from the Austin Board of REALTORS® (alternatively, from ACTRIS) from September 10th, 2021 at 9:45pm CDT. Neither the Board nor ACTRIS guarantees or is in any way responsible for its accuracy. The Austin Board of REALTORS®, ACTRIS and their affiliates provide the MLS and all content therein "AS IS" and without any warranty, express or implied. Data maintained by the Board or ACTRIS may not reflect all real estate activity in the market. All information provided is deemed reliable but is not guaranteed and should be independently verified.