

MLS® #2854156

4 Bedroom, 4.00 Bathroom, 3,155 sqft
Residential on 0.22 Acres

NEW CONSTRUCTION BY ASHTON WOODS HOMES! Estimated completion Jan/Feb 2022! No bidding. Inventory home includes all design finishes. Time to jump on this opportunity as it won't last long! Spacious 1-story with 15' sliding doors and fireplace in the family room. Extra large dining room with adjacent service area and a separate butler's pantry. Tray ceiling in the owners suite and beautiful covered patio backs up to greenbelt. Large mudroom off garage with extra tandem storage section. Dedicated study for work at home. Luxurious 1-story living!

Built in 2021

Essential Information

MLS® #	2854156
Price	\$962,243
Bedrooms	4
Bathrooms	4.00
Full Baths	3
Half Baths	1
Square Footage	3,155
Acres	0.22
Year Built	2021
Type	Residential
Sub-Type	Single Family Residence
Status	Active

Community Information



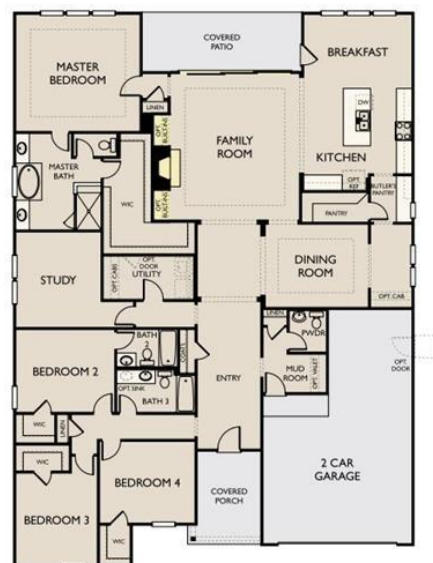
7/30/2021

Print - Whitney

ASHTON  WOODS.

Providence
Whitney

Bed: 4 | Bath: 3.5 | Garage: 2



¹ October 16, 2010. Ashton Woods Wealth Services reserves the right to change plans, specifications and pricing without notice or in spite of this disclaimer. Square footage is approximate and Rasterplan shall not be representative of actual floorplans. Floor, rising and ceiling elevations are approximate, subject to change without prior notice or obligation. They may not be stated to the contrary and may vary slightly elevation and/or construction. Rasterplan and/or Rasterplan 3D are trademarks of Ashton Woods Wealth Services. Rasterplan and Rasterplan 3D are model homes are design suggestions and not intended to be the same price as all developments, color schemes, floor plans, plans and displays are actual constructions and are not intended to be an actual depiction of the home or its surroundings. Basement options are available subject to the conditions. Home site premiums may apply. While we endeavor to display photos and accurate information, we make no representations or warranties regarding the information on this website and without limiting the foregoing, we are not responsible for any information.

Address	7636 Paruline Drive
Subdivision	Provence
City	Austin
County	Travis
State	TX
Zip Code	78738

Amenities

Utilities	Electricity Available, Natural Gas Available
Features	Clubhouse, Playground, Pool
Parking	Attached, Garage Faces Front, Garage
# of Garages	2
Garages	Garage Door Opener
View	Park/Greenbelt, Trees/Woods
Waterfront	None

Interior

Interior	Carpet, Tile, Wood
Appliances	Built-In Oven, Dishwasher, Exhaust Fan, Gas Cooktop, Disposal, Gas Water Heater, Microwave, Self Cleaning Oven
Heating	Central, Natural Gas
# of Fireplaces	1
Fireplaces	Family Room, Glass Doors
# of Stories	1
Stories	One

Exterior

Exterior Features	In-Wall Pest Control System, Rain Gutters
Lot Description	Sprinklers In Rear, Sprinklers In Front, Moderate Trees, Sprinklers Automatic, Sprinklers On Side
Roof	Composition
Construction	Brick Veneer, Masonry, Stone Veneer, Stucco
Foundation	Slab

School Information

District	Lake Travis ISD
Elementary	Bee Cave
Middle	Bee Cave Middle School
High	Lake Travis

Property Listed by: Austin Real Estate ExpertsThe information being provided is for consumers' personal, non-commercial use and may not be used for any purpose other than to identify prospective properties consumers may be interested in purchasing. Based on information from the Austin Board of REALTORS® (alternatively, from ACTRIS) from September 10th, 2021 at 5:17pm CDT. Neither the Board nor ACTRIS guarantees or is in any way responsible for its accuracy. The Austin Board of REALTORS®, ACTRIS and their affiliates provide the MLS and all content therein "AS IS" and without any warranty, express or implied. Data maintained by the Board or ACTRIS may not reflect all real estate activity in the market. All information provided is deemed reliable but is not guaranteed and should be independently verified.