

\$687,990 - 20205 Crested Caracara Lane, Pflugerville

MLS® #2525323

\$687,990

4 Bedroom, 4.00 Bathroom, 3,131 sqft
Residential on 0.17 Acres

Blackhawk, Pflugerville, TX

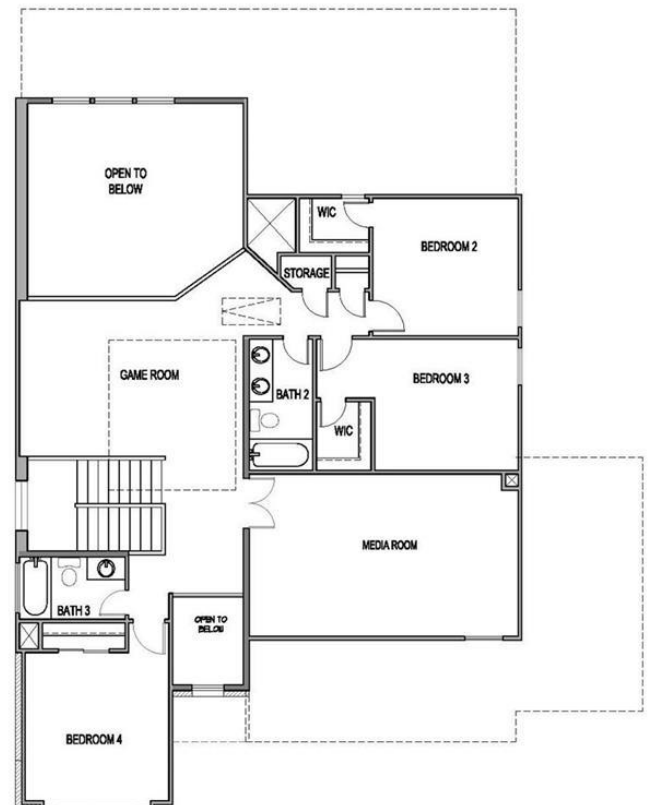
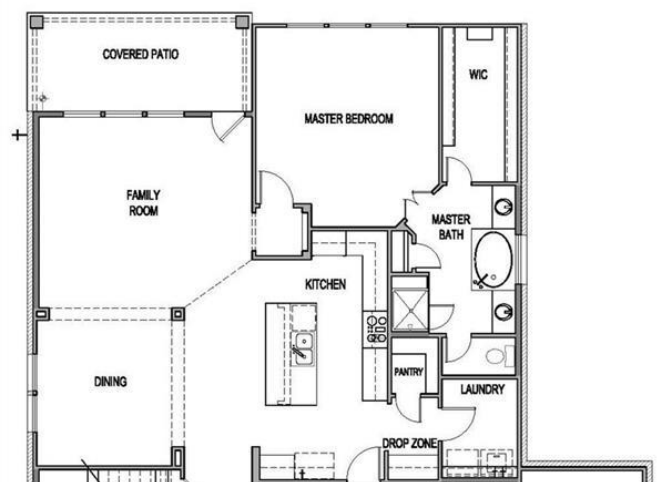
The Parmer home is a two story with approximately 3,131 sf of living space. 4 bedrooms, 3.5 bathrooms, home office, game room, media room, covered patio, and a 3 bay garage. This home-site is approximately 7,440 sf and faces North-West. The spacious kitchen features built in stainless steel appliances, quartz countertops, 42" cabinets, large island and more. The flooring is hard surface throughout the main areas, tile in the bathrooms, and carpet in the bedrooms. The quality construction includes; 10'™ ceilings and 8'™ doors throughout, 3 sides masonry, Zip System sheathing, and much more.

Built in 2021

Essential Information

MLS® #	2525323
Price	\$687,990
Bedrooms	4
Bathrooms	4.00
Full Baths	3
Half Baths	1
Square Footage	3,131
Acres	0.17
Year Built	2021
Type	Residential
Sub-Type	Single Family Residence
Status	Active

Community Information



Address	20205 Crested Caracara Lane
Subdivision	Blackhawk
City	Pflugerville
County	Travis
State	TX
Zip Code	78660

Amenities

Utilities	Cable Available, Electricity Connected, Natural Gas Connected, Sewer Connected, Water Connected
Features	Common Grounds/Area, Clubhouse, Community Mailbox, Golf, Playground, Pool
Parking	Driveway, Enclosed, Garage Faces Front, Garage
# of Garages	3
Garages	Garage Door Opener
View	None
Waterfront	None

Interior

Interior	Carpet, Tile, Vinyl
Appliances	Built-In Electric Oven, Cooktop, Dishwasher, ENERGY STAR Qualified Appliances, ENERGY STAR Qualified Dishwasher, Exhaust Fan, Gas Cooktop, Disposal, Gas Water Heater, Microwave, Plumbed For Ice Maker
Heating	Forced Air
Fireplaces	None
# of Stories	2
Stories	Two

Exterior

Exterior Features	Exterior Steps, In-Wall Pest Control System, Lighting, Private Yard, Rain Gutters
Lot Description	Sprinklers In Rear, Sprinklers In Front, Interior Lot, Sprinklers Automatic, Sprinklers In Ground, Sprinklers On Side, Trees Small Size
Roof	Composition
Construction	Brick, Brick Veneer, HardiPlank Type, Radiant Barrier, Stone, Stucco
Foundation	Slab

School Information

District	Pflugerville ISD
----------	------------------

Elementary	Mott
Middle	Cele
High	Weiss

Property Listed by: RGS Realty LLCThe information being provided is for consumers' personal, non-commercial use and may not be used for any purpose other than to identify prospective properties consumers may be interested in purchasing. Based on information from the Austin Board of REALTORS® (alternatively, from ACTRIS) from September 10th, 2021 at 4:31pm CDT. Neither the Board nor ACTRIS guarantees or is in any way responsible for its accuracy. The Austin Board of REALTORS®, ACTRIS and their affiliates provide the MLS and all content therein "AS IS" and without any warranty, express or implied. Data maintained by the Board or ACTRIS may not reflect all real estate activity in the market. All information provided is deemed reliable but is not guaranteed and should be independently verified.