

\$398,660 - 213 Kirby York Commons Road, Jarrell

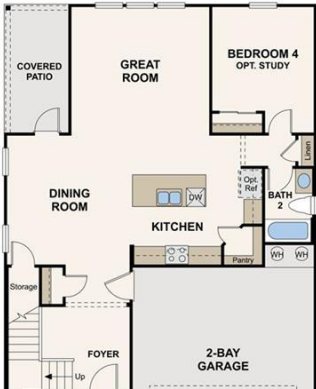
MLS® #1742724

\$398,660

4 Bedroom, 3.00 Bathroom, 2,560 sqft
Residential on 0.18 Acres

Sonterra, Jarrell, TX

2-Story; 4 Bedrooms, 3 Bathroom, 2-Bay garage. Game room upstairs. Kitchen features 42" Gray Painted cabinets, white quartz counter tops, subway tile backsplash, center island and corner pantry. Stainless-steel refrigerator and top-load washer/dryer set. 2- white faux wood blinds throughout. Covered patio. Other upgrades include: Platinum electrical package, walk-in shower and dual sinks at the vanity in the primary bath, extended wood-look tile throughout common areas on first floor and more. Redbud Plan, elevation B



Built in 2021

Essential Information

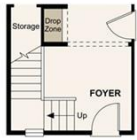
MLS® #	1742724
Price	\$398,660
Bedrooms	4
Bathrooms	3.00
Full Baths	3
Square Footage	2,560
Acres	0.18
Year Built	2021
Type	Residential
Sub-Type	Single Family Residence
Status	Active



OPT. WALK-IN SHOWER



OPT. SEPARATE TUB & SHOWER



OPT. DROP ZONE



OPT. STUDY

Community Information

Address 213 Kirby York Commons Road

Subdivision	Sonterra
City	Jarrell
County	Williamson
State	TX
Zip Code	76537

Amenities

Utilities	Cable Available, Electricity Available, High Speed Internet Available, Phone Available, Sewer Available, Water Available, Underground Utilities
Features	Common Grounds/Area, Clubhouse, Community Mailbox, Kitchen Facilities, Playground, Pool, Sport Court(s), Curbs
Parking	Attached, Concrete, Driveway, Garage Faces Front, Garage
# of Garages	2
Garages	Garage Door Opener
View	None
Waterfront	None

Interior

Interior	Carpet, Tile
Appliances	Dryer, Dishwasher, Electric Water Heater, Free-Standing Electric Oven, Free-Standing Refrigerator, Disposal, Microwave, Stainless Steel Appliance(s), Vented Exhaust Fan, Washer
Heating	Central, Exhaust Fan, Radiant Ceiling
# of Stories	2
Stories	Two

Exterior

Exterior Features	Private Yard, See Remarks
Lot Description	Back Yard, Front Yard, Sprinklers In Rear, Sprinklers In Front, Landscaped, Native Plants, Sprinkler - Rain Sensor, Sprinklers Automatic, Sprinklers On Side, Trees Small Size
Roof	Composition
Construction	Attic/Crawl Hatchway(s) Insulated, Blown-In Insulation, Frame, HardiPlank Type, Masonry, Radiant Barrier, Stone
Foundation	Slab

School Information

District	Jarrell ISD
Elementary	Other Igo

Middle

Jarrell

High

Jarrell

Property Listed by: Century Communities - CROTXThe information being provided is for consumers' personal, non-commercial use and may not be used for any purpose other than to identify prospective properties consumers may be interested in purchasing. Based on information from the Austin Board of REALTORS® (alternatively, from ACTRIS) from September 10th, 2021 at 5:17pm CDT. Neither the Board nor ACTRIS guarantees or is in any way responsible for its accuracy. The Austin Board of REALTORS®, ACTRIS and their affiliates provide the MLS and all content therein "AS IS" and without any warranty, express or implied. Data maintained by the Board or ACTRIS may not reflect all real estate activity in the market. All information provided is deemed reliable but is not guaranteed and should be independently verified.