

\$360,000 - 24215 Sundown Pass, San Antonio

MLS® #1558732

\$360,000

3 Bedroom, 3.00 Bathroom, 2,833 sqft
Residential on 0.19 Acres

Bulverde Village, San Antonio, TX

Showings starting Monday 9/13/21. This beautiful former model home features over 2800sf. Located in a cul-de-sac. Abundant amount of natural light, high ceilings, and neutral palette make this home easy to make your own. Features a large eat in kitchen with stainless appliances. Family room has with a ton of space to accommodate any furniture size, and the master has a full sitting area and full bath with separate shower. Relax and entertain in the new in-ground pool.

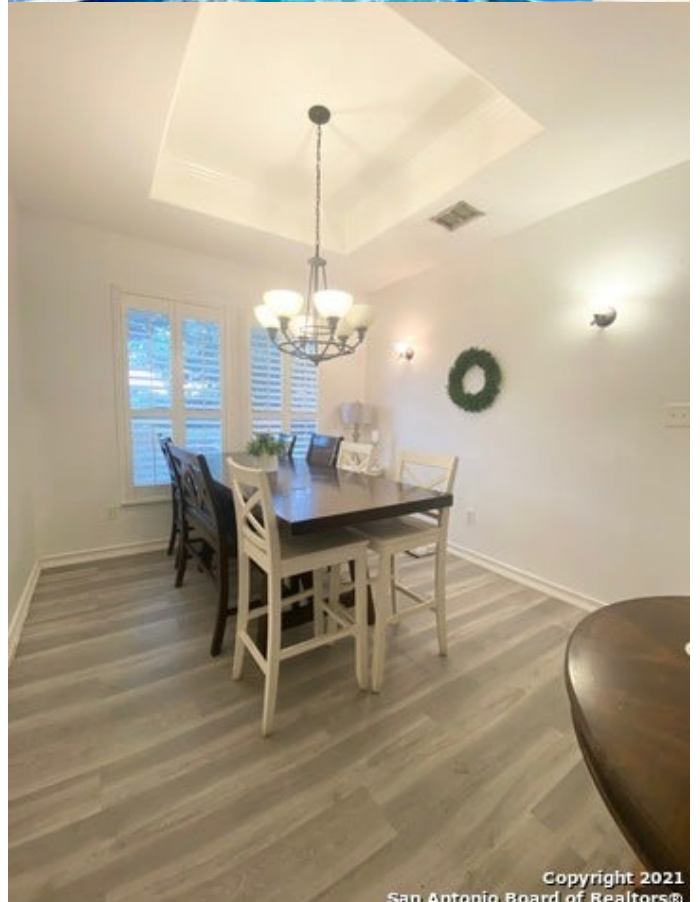
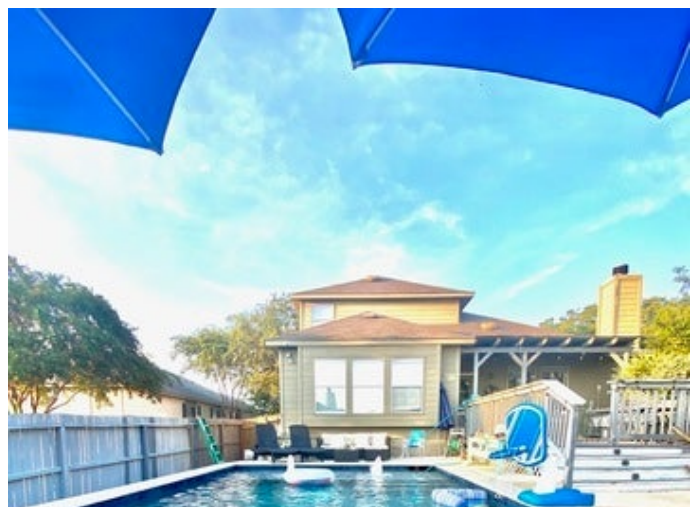
Built in 2007

Essential Information

MLS® #	1558732
Price	\$360,000
Bedrooms	3
Bathrooms	3.00
Full Baths	3
Square Footage	2,833
Acres	0.19
Year Built	2007
Type	Residential
Sub-Type	Single Family Detached
Style	Two Story
Status	New

Community Information

Address	24215 Sundown Pass
Subdivision	Bulverde Village



City	San Antonio
County	Bexar
State	TX
Zip Code	78261

Amenities

Amenities	Pool, Park/Playground, Jogging Trails, Sports Court, BBQ/Grill, Basketball Court
Parking	Two Car Garage
Has Pool	Yes
Pool	In Ground Pool

Interior

Interior	One Living Area, Separate Dining Room, Eat-In Kitchen, Breakfast Bar, Walk-In Pantry, Study/Library, Game Room, Loft, High Ceilings, Open Floor Plan, Laundry Main Level, Laundry Room, Walk in Closets
Appliances	Ceiling Fans, Washer Connection, Dryer Connection, Microwave Oven, Stove/Range, Refrigerator, Disposal, Dishwasher, Ice Maker Connection, Smoke Alarm, Electric Water Heater, City Garbage service
Heating	Central
Cooling	One Central
Fireplace	Yes
# of Fireplaces	1
Fireplaces	One
# of Stories	2
Stories	2

Exterior

Exterior	Brick, Stone/Rock
Roof	Composition
Construction	Pre-Owned
Foundation	Slab

School Information

District	North East ISD
Middle	Tex Hill
High	Johnson

Listing Details

Listing Office	Reliance Residential Realty-BL
----------------	--------------------------------

The data relating to real estate on this web site comes in part from the Internet Data Exchange program of the MLS of the San Antonio Board of Realtors®, and is updated as of September 10th, 2021 at 10:45pm CDT (date/time). IDX information is provided exclusively for consumers' personal, non-commercial use and may not be used for any purpose other than to identify prospective properties consumers may be interested in purchasing.