

\$341,705 - 7320 Solar Eclipse, Converse

MLS® #1558312

\$341,705

4 Bedroom, 3.00 Bathroom, 2,561 sqft
Residential on 0.00 Acres

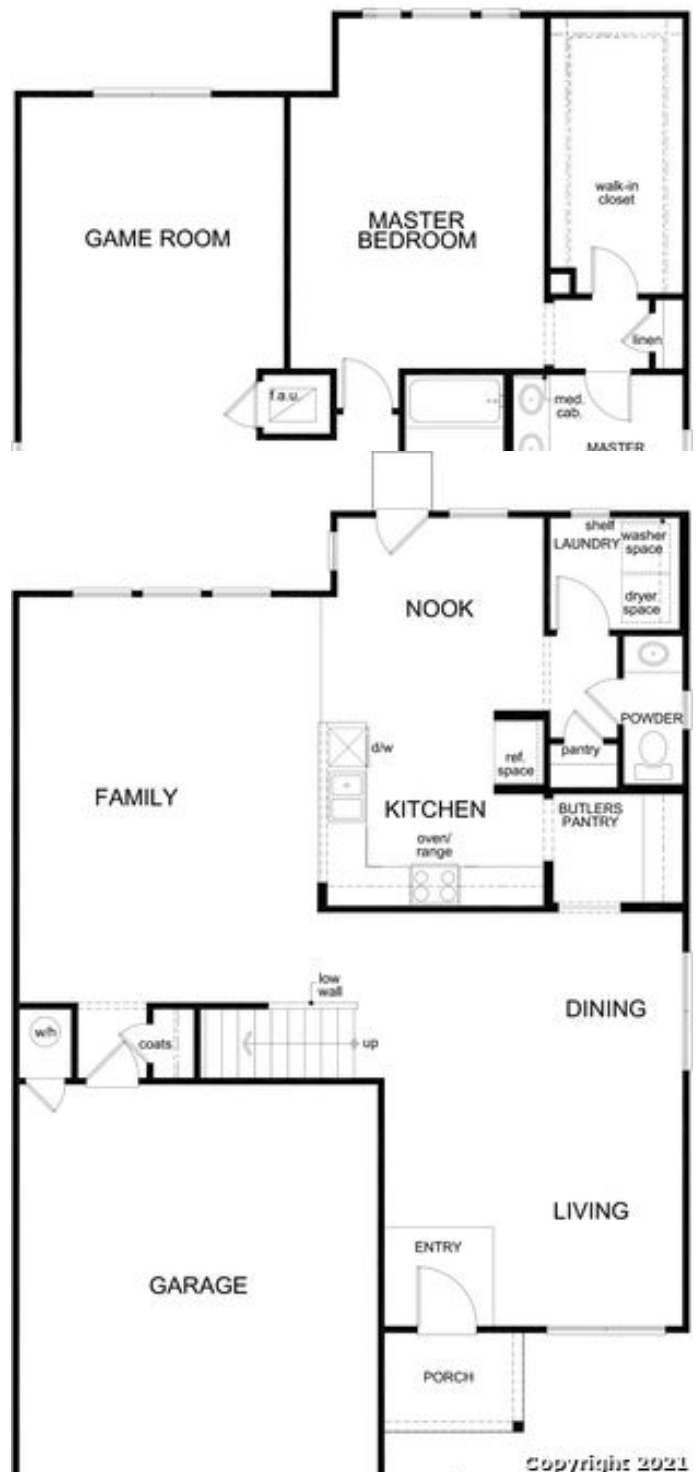
HORIZON POINTE, Converse, TX

Ready in Nov/Dec! This spacious 2-story home offers 9-ft. first floor ceilings. The kitchen has 42-in. cabinets, granite countertops with an upgraded tile backsplash, and Whirlpool stainless steel appliances. A butler's pantry connects the kitchen to a formal dining space. Enjoy a separate 42-in. garden tub and shower with tile surround at the master bath. A downstairs study is perfect for a private home office or greeting guests while family members enjoy the upstairs game room. BBQ and entertain outdoors with a covered patio and large backyard with full sprinkler system. Other features include: wireless security system.

Built in 2021

Essential Information

MLS® #	1558312
Price	\$341,705
Bedrooms	4
Bathrooms	3.00
Full Baths	2
Half Baths	1
Square Footage	2,561
Acres	0.00
Year Built	2021
Type	Residential
Sub-Type	Single Family Detached
Style	Two Story
Status	Price Change



Community Information

Address	7320 Solar Eclipse
Subdivision	HORIZON POINTE
City	Converse
County	Bexar
State	TX
Zip Code	78109

Amenities

Amenities	Pool, Park/Playground
Parking	Two Car Garage
Pool	None

Interior

Appliances	Washer Connection, Dryer Connection
Heating	Central
Cooling	One Central
Fireplaces	Not Applicable
# of Stories	2
Stories	2

Exterior

Exterior	Cement Fiber, Stone/Rock, Brick
Roof	Composition
Construction	New
Foundation	Slab

School Information

District	Judson ISD
Middle	Metzger
High	Wagner

Listing Details

Listing Office	SATEX Properties, Inc.
----------------	------------------------

The data relating to real estate on this web site comes in part from the Internet Data Exchange program of the MLS of the San Antonio Board of Realtors®, and is updated as of September 11th, 2021 at 11:30am CDT (date/time). IDX information is provided exclusively for consumers' personal, non-commercial use and may not be used for any purpose other than to identify prospective properties consumers may be interested in purchasing.