

# \$279,000 - 17770 Interstate 35 S, Lytle

MLS® #1558119

## \$279,000

Bedroom, Bathroom, 32,365 sqft  
Commercial on 0.74 Acres

N/A, Lytle, TX

354' of IH 35 Frontage almost at the corner of Luckey Rd. Easy freeway access. Apx 3/4 acre with virtually no usage restrictions. The value of this property is in the land, buildings are in need of repairs.

## Essential Information

MLS® #	1558119
Price	\$279,000
Square Footage	32,365
Acres	0.74
Type	Commercial
Sub-Type	Commercial Land
Status	New

## Community Information

Address	17770 Interstate 35 S
Subdivision	N/A
City	Lytle
County	Bexar
State	TX
Zip Code	78052

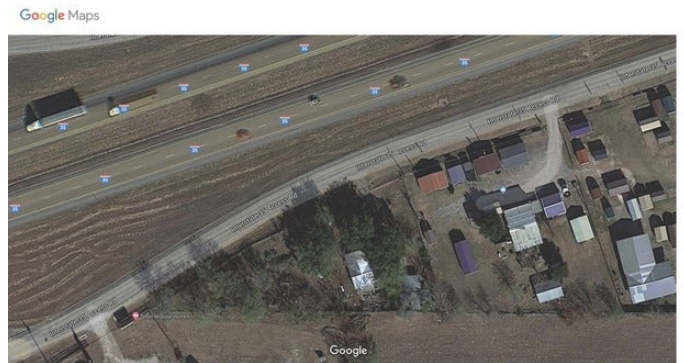
## Amenities

Utilities	Electricity, Septic, Other
-----------	----------------------------

## Additional Information

Zoning	OCL
--------	-----

## Listing Details



Listing Office

Century 21 Scott Myers,REALTOR

The data relating to real estate on this web site comes in part from the Internet Data Exchange program of the MLS of the San Antonio Board of Realtors®, and is updated as of September 11th, 2021 at 12:30pm CDT (date/time). IDX information is provided exclusively for consumers' personal, non-commercial use and may not be used for any purpose other than to identify prospective properties consumers may be interested in purchasing.