

\$380,000 - 31967 Cast Iron Cv, Bulverde

MLS® #1557175

\$380,000

4 Bedroom, 3.00 Bathroom, 2,350 sqft
Residential on 0.25 Acres

JOHNSON RANCH NORTH, Bulverde, TX

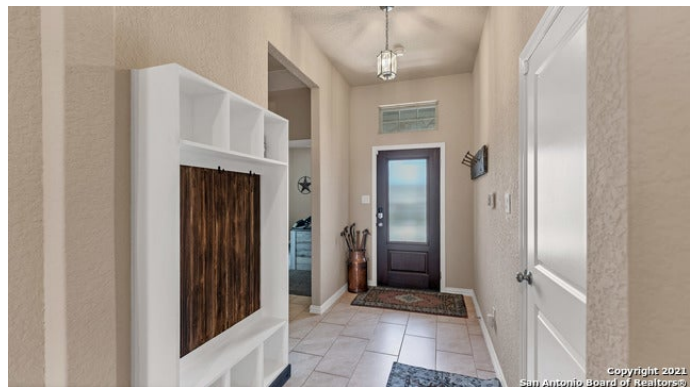
This smart home with dazzling curb appeal is designed with comfortable living in mind. It features a large open floor plan with a massive island perfect for entertaining, a 3 car garage complete with an epoxy flooring (workbenches are negotiable), and a privately situated master suite. Your home sweet home all within walking distance to Kleck Park where you can enjoy the trails or take the kiddos to the playground. A MUST SEE!

Built in 2018



Essential Information

MLS® #	1557175
Price	\$380,000
Bedrooms	4
Bathrooms	3.00
Full Baths	3
Square Footage	2,350
Acres	0.25
Year Built	2018
Type	Residential
Sub-Type	Single Family Detached
Style	One Story, Traditional
Status	Active Option



Community Information

Address	31967 Cast Iron Cv
Subdivision	JOHNSON RANCH NORTH

City	Bulverde
County	Comal
State	TX
Zip Code	78163-4046

Amenities

Amenities	Controlled Access, Park/Playground, Jogging Trails
Parking	Attached
Pool	None

Interior

Interior	One Living Area, Eat-In Kitchen, Two Eating Areas, Island Kitchen, Breakfast Bar, High Ceilings, Open Floor Plan, Pull Down Storage, Cable TV Available, High Speed Internet, Laundry Main Level, Laundry Room, Walk in Closets, Attic - Partially Floored, Attic - Pull Down Stairs
Appliances	Ceiling Fans, Washer Connection, Dryer Connection, Stove/Range, Gas Cooking, Refrigerator, Disposal, Dishwasher, Gas Water Heater, Garage Door Opener, Solid Counter Tops, Security System (Leased)
Heating	Central, 1 Unit
Cooling	One Central
Fireplaces	Not Applicable
# of Stories	1
Stories	1

Exterior

Exterior	Brick, Rock/Stone Veneer
Exterior Features	Covered Patio, Privacy Fence, Sprinkler System, Wire Fence
Lot Description	1/2-1 Acre, Sloping
Roof	Composition
Construction	Pre-Owned
Foundation	Slab

School Information

District	Comal ISD
Middle	Smithson Valley
High	Smithson Valley

Listing Details

Listing Office	Keller Williams Heritage
----------------	--------------------------

The data relating to real estate on this web site comes in part from the Internet Data Exchange program of the MLS of

the San Antonio Board of Realtors®, and is updated as of September 10th, 2021 at 5:32pm CDT (date/time). IDX information is provided exclusively for consumers' personal, non-commercial use and may not be used for any purpose other than to identify prospective properties consumers may be interested in purchasing.