

\$2,610,000 - 104 S Tower Dr, Hill Country Village

MLS® #1556326

\$2,610,000

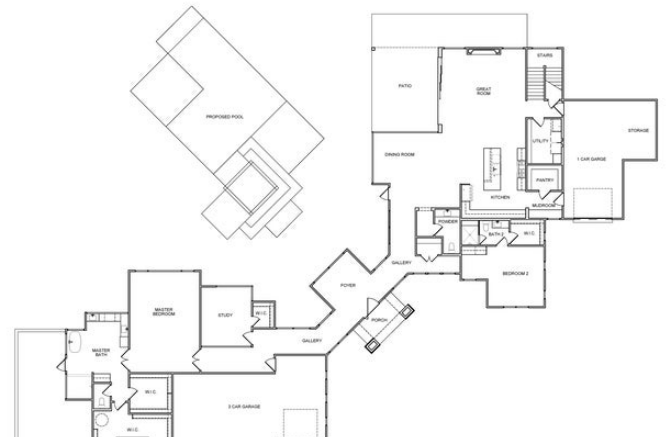
4 Bedroom, 5.00 Bathroom, 5,300 sqft

Residential on 1.02 Acres

HILL COUNTRY ESTATES, Hill Country Village, TX

This Custom Home Sitting on 1.02 acres in the coveted neighborhood community of Hill Country Village, the Centerpoint stretches approximately 5,300 square feet among unique, elevated San Antonio. This home was listed before start of construction.

Built in 2021



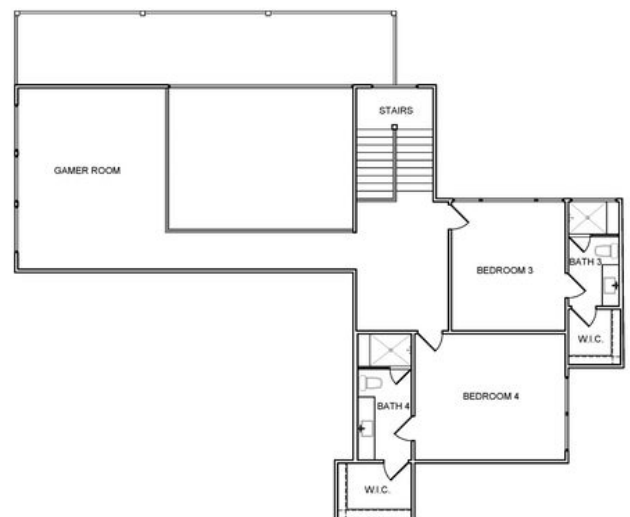
Copyright 2021
San Antonio Board of Realtors®

Essential Information

| | |
|----------------|-------------------------|
| MLS® # | 1556326 |
| Price | \$2,610,000 |
| Bedrooms | 4 |
| Bathrooms | 5.00 |
| Full Baths | 4 |
| Half Baths | 1 |
| Square Footage | 5,300 |
| Acres | 1.02 |
| Year Built | 2021 |
| Type | Residential |
| Sub-Type | Single Family Detached |
| Style | Two Story, Contemporary |
| Status | Active |

Community Information

| | |
|-------------|----------------------|
| Address | 104 S Tower Dr |
| Subdivision | HILL COUNTRY ESTATES |
| City | Hill Country Village |
| County | Bexar |
| State | TX |



Copyright 2021
San Antonio Board of Realtors®

| | |
|----------|------------|
| Zip Code | 78232-4360 |
|----------|------------|

Amenities

| | |
|-----------|----------------|
| Amenities | None |
| Parking | Oversized |
| Has Pool | Yes |
| Pool | In Ground Pool |

Interior

| | |
|-----------------|--|
| Interior | One Living Area, Separate Dining Room, Two Eating Areas, Island Kitchen, Breakfast Bar, Walk-In Pantry, Study/Library, Game Room, High Ceilings, Open Floor Plan, Cable TV Available, High Speed Internet, Laundry Main Level, Walk in Closets |
| Appliances | Washer Connection, Dryer Connection |
| Heating | Central |
| Cooling | Three+ Central |
| Fireplace | Yes |
| # of Fireplaces | 1 |
| Fireplaces | Family Room |
| # of Stories | 2 |
| Stories | 2 |

Exterior

| | |
|-------------------|--|
| Exterior | 4 Sides Masonry, Stucco, Rock/Stone Veneer |
| Exterior Features | Covered Patio, Double Pane Windows |
| Lot Description | 1 - 2 Acres |
| Roof | Metal |
| Construction | New |
| Foundation | Slab |

School Information

| | |
|------------|----------------|
| District | North East ISD |
| Elementary | Hidden Forest |
| Middle | Bradley |
| High | Churchill |

Listing Details

| | |
|----------------|-------------------------------|
| Listing Office | Rhapsody Realty Services, LLC |
|----------------|-------------------------------|

The data relating to real estate on this web site comes in part from the Internet Data Exchange program of the MLS of the San Antonio Board of Realtors®, and is updated as of September 11th, 2021 at 12:00pm CDT (date/time). IDX

information is provided exclusively for consumers' personal, non-commercial use and may not be used for any purpose other than to identify prospective properties consumers may be interested in purchasing.