

# \$949,900 - 215 Whitworth Rd, Boerne

MLS® #1553656

## \$949,900

3 Bedroom, 3.00 Bathroom, 2,884 sqft  
Residential on 26.43 Acres

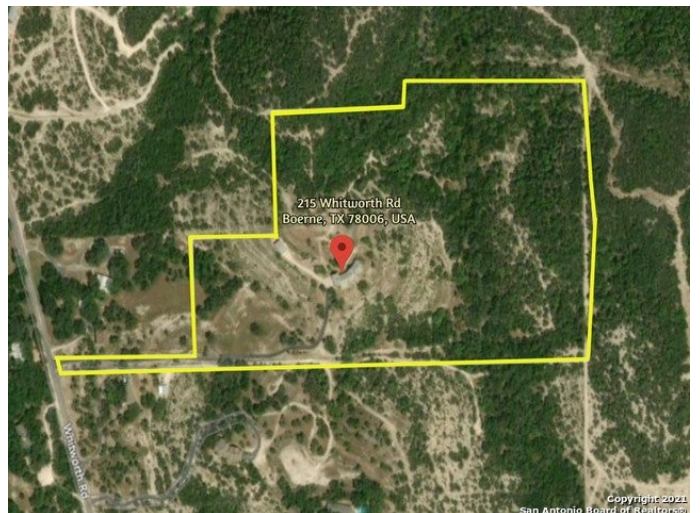
### SKYVIEW ACRES, Boerne, TX

Magnificent one-story custom built home with 3 beds/2.5 baths/3 car garage, +/-2884 sqft in Skyview Acres. +/- 26.432 acres with great views, original 14.995 acres fenced and two sides of 11.436 acres fenced. Open floor plan w/high ceilings, fireplace in great room, living/dining room combo, powder room, utility room, mud room & large study w/ plenty of natural light. Galley kitchen and appliances w/ walk-in pantry, breakfast bar, quartz countertops & plenty of cabinet space. Large master bedroom w/ outside access to covered porch, a walk-in closet, & sitting area. Luxurious master bath w/separate sinks and vanities, jacuzzi tub, & walk-in shower. 12'x28' bonus room above the garage w/ heat & a/c unit. Solar attic fan included. Acres of gorgeous mountain views, huge lot with plenty of space for horses or livestock. 15'x20' covered pavilion with cedar siding, ceiling fan, standing seam roof, electricity & brick fire pit. 3 covered porches - one with an outdoor fireplace. 10'x16' cedar cabin, new 8x12 storage building, 3200 gallon concrete water storage tank, 24'x20' metal barn, holding pond, well & well house. Exemplary rated Boerne schools. WELCOME HOME!

Built in 2001

## Essential Information

MLS® #	1553656
Price	\$949,900



Bedrooms	3
Bathrooms	3.00
Full Baths	2
Half Baths	1
Square Footage	2,884
Acres	26.43
Year Built	2001
Type	Residential
Sub-Type	Single Family Detached
Style	One Story
Status	Pending

### Community Information

Address	215 Whitworth Rd
Subdivision	SKYVIEW ACRES
City	Boerne
County	Kendall
State	TX
Zip Code	78006-8551

### Amenities

Amenities	None
Parking	Attached, Rear Entry
Pool	None

### Interior

Interior	Liv/Din Combo, Breakfast Bar, Walk-In Pantry, Study/Library, Utility Room Inside, 1st Floor Lvl/No Steps, High Ceilings, Cable TV Available, High Speed Internet, Laundry Room, Telephone, Walk in Closets, All Bedrooms Downstairs, Attic - Attic Fan, Attic - Finished, Attic - Permanent Stairs, Laundry Main Level, Skylights
Appliances	Ceiling Fans, Washer Connection, Dryer Connection, Cook Top, Built-In Oven, Self-Cleaning Oven, Microwave Oven, Stove/Range, Refrigerator, Disposal, Dishwasher, Ice Maker Connection, Water Softener (owned), Smoke Alarm, Security System (Owned), Electric Water Heater, Garage Door Opener, Plumb for Water Softener, Solid Counter Tops, Private Garbage Service, Double Ovens, Pre-Wired for Security, Satellite Dish (owned)
Heating	Central, Heat Pump, 2 Units
Cooling	Two Central, Heat Pump, Zoned

Fireplace	Yes
# of Fireplaces	2
Fireplaces	Living Room, Glass/Enclosed Screen, Two, Wood Burning
# of Stories	1
Stories	1

## Exterior

Exterior	Stone/Rock, Stucco
Exterior Features	Covered Patio, Double Pane Windows, Mature Trees, Partial Fence, Storage Building/Shed, Workshop
Lot Description	15 Acres Plus, County Vlew, Horses Allowed, Mature Trees (ext feat), Secluded, Sloping, Wooded
Roof	Metal
Construction	Pre-Owned
Foundation	Slab

## School Information

District	Boerne ISD
Elementary	Fabra
Middle	Boerne Middle S
High	Champion

## Listing Details

Listing Office	Keller Williams Boerne
----------------	------------------------

The data relating to real estate on this web site comes in part from the Internet Data Exchange program of the MLS of the San Antonio Board of Realtors®, and is updated as of September 10th, 2021 at 6:02pm CDT (date/time). IDX information is provided exclusively for consumers' personal, non-commercial use and may not be used for any purpose other than to identify prospective properties consumers may be interested in purchasing.