

\$84,900 - 9845 Briggs, Von Ormy

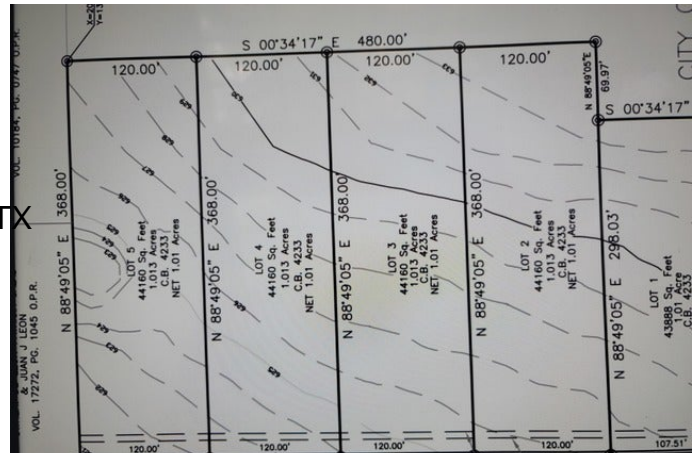
MLS® #1553502

\$84,900

Bedroom, Bathroom, 44,160 sqft
Lots and Acreage on 4.00 Acres

KINNEY SUBDIVISION PLATT PENDI, Von Ormy, TX

INDIVIDUAL LOTS SOLD. Lots 2,3,4,5 for sale individually. The price is \$84,900 per lot. see the attached Kinney Subdivision Platt - pending. Breezey country view lots, frontage on Kinney Road 120 ft x 368 in-depth, 1.01 acre lots. Sandy loam soil, Utilities in the area but not on-site. The seller is not providing utilities or a septic tank. SELLER RESTRICTION - NO MOBILE HOMES OR MANUFACTURED HOMES RESIDENTIAL STICK BUILD ONLY. The seller will accept contracts but will not close until the Platt is final. VERIFY ALL INFORMATION.



Essential Information

MLS® #	1553502
Price	\$84,900
Square Footage	44,160
Acres	4.00
Type	Lots and Acreage
Sub-Type	Residential Lot
Status	Active

Community Information

Address	9845 Briggs
Subdivision	KINNEY SUBDIVISION PLATT PENDI
City	Von Ormy
County	Bexar
State	TX
Zip Code	78073



Amenities

Amenities	Other - See Remarks
Utilities	Electric, Water System

Exterior

Lot Description	Partial Cleared, Undeveloped
-----------------	------------------------------

School Information

District	Somerset ISD
Elementary	Somerset
Middle	Somerset
High	Somerset

Additional Information

Zoning	OCL
--------	-----

Listing Details

Listing Office	Kingsland Properties
----------------	----------------------

The data relating to real estate on this web site comes in part from the Internet Data Exchange program of the MLS of the San Antonio Board of Realtors®, and is updated as of September 11th, 2021 at 12:15pm CDT (date/time). IDX information is provided exclusively for consumers' personal, non-commercial use and may not be used for any purpose other than to identify prospective properties consumers may be interested in purchasing.