

\$209,000 - 2318 Clower, San Antonio

MLS® #1553420

\$209,000

2 Bedroom, 2.00 Bathroom, 1,314 sqft

Residential on 0.11 Acres

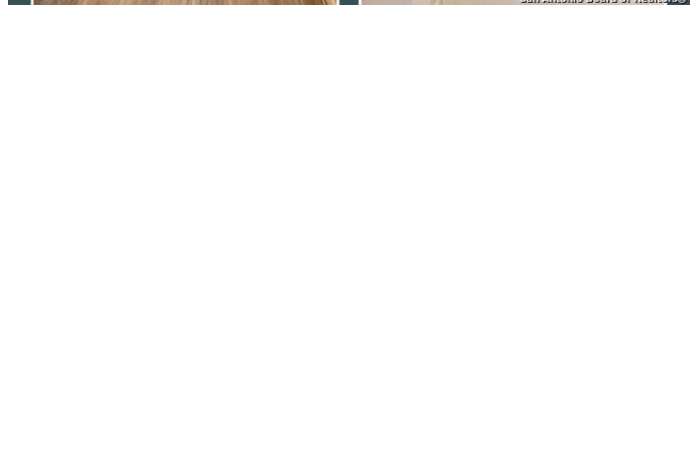
LOS ANGELES HTS/KEYSTONE HISTO, San Antonio, TX

This one of kind traditional farm style home is absolutely adorable. This split floorplan is dual level with big master upstairs and secondary bedroom down. This open floor plan boast vinyl wood floors through out shiplap living wall ,tile in wet areas, with upgraded baths and light fixtures throughout. Don't forget bonus office / flex space or small playroom. The kitchen has a inviting kitchen with movable island and subway tile and upgraded counter tops and cabinets with bonus gas stove for cooking. There is a workshop / storage that could be a garage or added rooms/ apartment etc., etc. many ideas to choose with lots of extra space that's being used as storage, and even sheet rocked. Don't forget the private back yard with mature trees. This home offers it all next to central highways , shopping and close to downtown, this home is well loved by the owners and a must see!!

Built in 1942

Essential Information

MLS® #	1553420
Price	\$209,000
Bedrooms	2
Bathrooms	2.00
Full Baths	2
Square Footage	1,314
Acres	0.11
Year Built	1942



Type	Residential
Sub-Type	Single Family Detached
Style	Two Story, Traditional, Contemporary, Historic/Older
Status	Pending

Community Information

Address	2318 Clower
Subdivision	LOS ANGELES HTS/KEYSTONE HISTO
City	San Antonio
County	Bexar
State	TX
Zip Code	78201-3342

Amenities

Amenities	None
Parking	None/Not Applicable
Pool	None

Interior

Interior	One Living Area, Liv/Din Combo, Eat-In Kitchen, Study/Library, Utility Room Inside, Secondary Bedroom Down, Open Floor Plan, Cable TV Available, High Speed Internet, Laundry Main Level, Laundry Room
Appliances	Ceiling Fans, Washer Connection, Dryer Connection, Stove/Range, Gas Cooking, Disposal, Smoke Alarm, Electric Water Heater, Solid Counter Tops, City Garbage service
Heating	3+ Units
Cooling	3+ Window/Wall
Fireplaces	Not Applicable
# of Stories	2
Stories	2

Exterior

Exterior	Wood, Siding, Asbestos Shingle
Exterior Features	Privacy Fence, Storage Building/Shed, Mature Trees, Workshop, Other - See Remarks, Chain Link Fence
Lot Description	Level
Roof	Composition
Construction	Pre-Owned
Foundation	Slab

School Information

District	San Antonio ISD
Elementary	Franklin
Middle	Whittier
High	Edison

Listing Details

Listing Office Central Metro Realty, LLC

The data relating to real estate on this web site comes in part from the Internet Data Exchange program of the MLS of the San Antonio Board of Realtors®, and is updated as of September 10th, 2021 at 5:17pm CDT (date/time). IDX information is provided exclusively for consumers' personal, non-commercial use and may not be used for any purpose other than to identify prospective properties consumers may be interested in purchasing.