

\$272,000 - 12141 Pease River, San Antonio

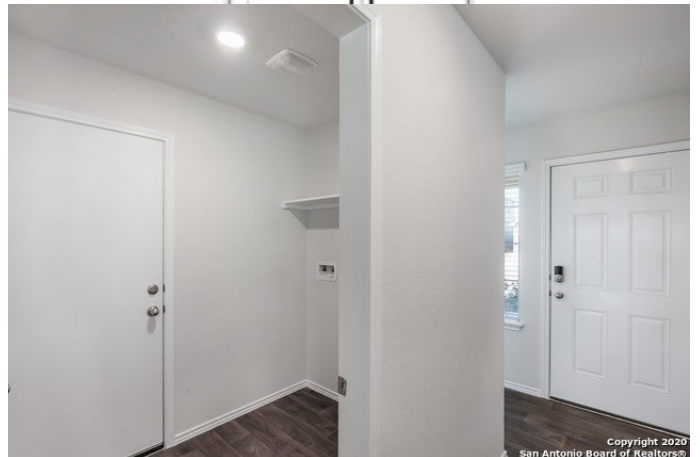
MLS® #1551371

\$272,000

3 Bedroom, 2.00 Bathroom, 1,396 sqft
Residential on 0.00 Acres

STONEY CREEK, San Antonio, TX

This home is currently under construction. The Brooke plan is a one-story home featuring 3 bedrooms, 2 baths, and 2-car garage. The front covered patio opens to a gourmet kitchen including granite counter tops, black appliances. Perfect for entertaining, The Brooke features an open concept floorplan with the kitchen separating the living room and dining room. The first bedroom features an attractive ensuite complete with walk-in shower, extra large water closet, and large walk-in closet. The rear covered patio comes built standard and is located off the dining room. Additional features include sheet vinyl flooring in entry, living room, and all wet areas, granite counter tops in all bathrooms, and full yard landscaping and irrigation. This home includes our HOME IS CONNECTED base package which includes the Amazon Dot, Front Door Bell, Front Door Deadbolt Lock, Home Hub, Light Switch, and Thermostat. New construction homes at Stoney Creek in San Antonio, TX! Find your new home at Stoney Creek! This new Express Homes community provides easy access to both HWY 90 & Loop 1604. Located off Groesenbacher Rd. and just minutes away Lackland Air Force Base. Looking for family fun? Your new home is located just minutes away from SeaWorld, Downtown San Antonio, The Golf Club of Texas, and more! Find affordable floor plans ranging from 945 square feet to 2530 square feet and featuring granite kitchen and bathroom countertops and black appliances.



Stoney Creek new construction homes will feature D.R. Horton's new smart home system, Home Is Connected, ensuring security and peace of mind. *USDA 100% Financing Available if you qualify! Don't miss out on these new homes in San Antonio, TX at a great price! Receive Stoney Creek community updates straight to your inbox! Join Our V.I.P List Today!

Built in 2021

Essential Information

MLS® #	1551371
Price	\$272,000
Bedrooms	3
Bathrooms	2.00
Full Baths	2
Square Footage	1,396
Acres	0.00
Year Built	2021
Type	Residential
Sub-Type	Single Family Detached
Style	One Story
Status	Active

Community Information

Address	12141 Pease River
Subdivision	STONEY CREEK
City	San Antonio
County	Bexar
State	TX
Zip Code	78245

Amenities

Amenities	Pool, Park/Playground
Parking	Two Car Garage
Pool	None

Interior

Interior	One Living Area, Separate Dining Room, Loft, Secondary Bedroom Down, Open Floor Plan, Cable TV Available
Appliances	Washer Connection, Dryer Connection, Stove/Range, Gas Cooking, Disposal, Dishwasher, Ice Maker Connection, Vent Fan, Smoke Alarm, Gas Water Heater
Heating	Central
Cooling	One Central
Fireplaces	Not Applicable
# of Stories	1
Stories	1

Exterior

Exterior	Brick, Cement Fiber
Exterior Features	Covered Patio, Privacy Fence, Sprinkler System, Double Pane Windows
Roof	Composition
Construction	New
Foundation	Slab

School Information

District	Medina Valley ISD
Middle	Loma Alta
High	Medina Valley

Listing Details

Listing Office	Keller Williams Heritage
----------------	--------------------------

The data relating to real estate on this web site comes in part from the Internet Data Exchange program of the MLS of the San Antonio Board of Realtors®, and is updated as of September 10th, 2021 at 4:36pm CDT (date/time). IDX information is provided exclusively for consumers' personal, non-commercial use and may not be used for any purpose other than to identify prospective properties consumers may be interested in purchasing.