

# \$266,990 - 933 Cinnamon Teal, Seguin

MLS® #1550280

## \$266,990

4 Bedroom, 2.00 Bathroom, 1,612 sqft  
Residential on 0.14 Acres

ARROYO RANCH, Seguin, TX

This beautiful new single story 1,612 sq ft home offering 4 bedrooms and 2 baths. This home features a foyer leading into the kitchen. The open kitchen overlooks the living and dining area and features spacious granite countertop and stainless steel appliances. Enjoy the main bedroom, bedroom 1, located off the family room. Featuring a huge walk in closet and large walk in shower. The Elgin comes with a covered rear patio giving view to the professionally irrigated and landscaped yard complete with Bermuda sod. This home includes our HOME IS CONNECTED base package which includes the Alexa Voice control, Front Door Bell, Front Door Deadbolt Lock, Home Hub, Light Switch, and Thermostat.

Built in 2021

## Essential Information

MLS® #	1550280
Price	\$266,990
Bedrooms	4
Bathrooms	2.00
Full Baths	2
Square Footage	1,612
Acres	0.14
Year Built	2021
Type	Residential
Sub-Type	Single Family Detached

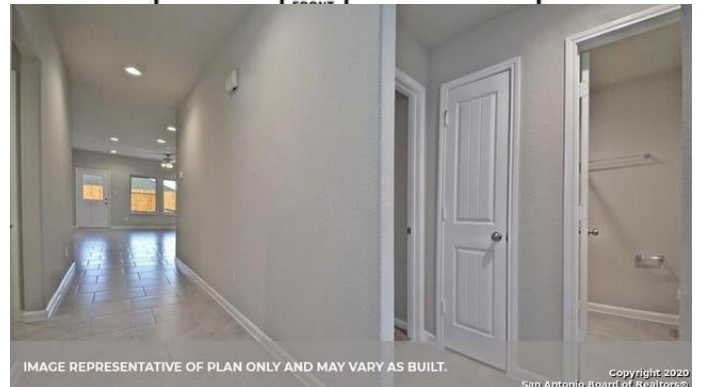
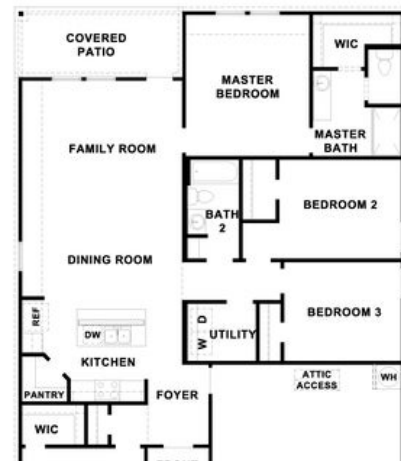


IMAGE REPRESENTATIVE OF PLAN ONLY AND MAY VARY AS BUILT.

Copyright 2020  
San Antonio Board of Realtors®

Style	One Story
Status	Pending

### Community Information

Address	933 Cinnamon Teal
Subdivision	ARROYO RANCH
City	Seguin
County	Guadalupe
State	TX
Zip Code	78155

### Amenities

Amenities	Pool
Parking	Two Car Garage, Attached
Pool	None

### Interior

Interior	One Living Area, All Bedrooms Downstairs, Attic - Radiant Barrier Decking, Eat-In Kitchen, Island Kitchen, Laundry Main Level, Open Floor Plan, Utility Room Inside, Walk in Closets, Walk-In Pantry
Appliances	Washer Connection, Dryer Connection, Stove/Range, Built-In Oven, City Garbage service, Cook Top, Carbon Monoxide Detector, Disposal, Dishwasher, Electric Water Heater, Pre-Wired for Security, Solid Counter Tops, Smoke Alarm
Heating	Central
Cooling	One Central
Fireplaces	Not Applicable
# of Stories	1
Stories	1

### Exterior

Exterior	1 Side Masonry, Brick
Exterior Features	Covered Patio, Double Pane Windows, Has Gutters, Sprinkler System
Roof	Composition
Construction	New
Foundation	Slab

### School Information

District	Seguin ISD
Elementary	Vogel Elementary

High

Seguin

## **Listing Details**

Listing Office

D.R. Horton Austin

The data relating to real estate on this web site comes in part from the Internet Data Exchange program of the MLS of the San Antonio Board of Realtors®, and is updated as of September 11th, 2021 at 7:15pm CDT (date/time). IDX information is provided exclusively for consumers' personal, non-commercial use and may not be used for any purpose other than to identify prospective properties consumers may be interested in purchasing.