

\$293,000 - 215 Palma Noce, San Antonio

MLS® #1548533

\$293,000

4 Bedroom, 3.00 Bathroom, 2,612 sqft
Residential on 0.11 Acres

MONTICELLO RANCH, San Antonio, TX

Built in 2013, this San Antonio two-story home offers a two-car garage. This home has been virtually staged to illustrate its potential.

Built in 2013

Essential Information

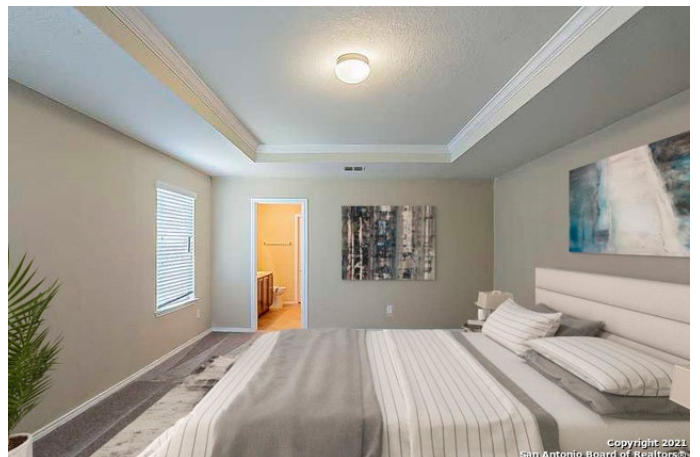
MLS® #	1548533
Price	\$293,000
Bedrooms	4
Bathrooms	3.00
Full Baths	3
Square Footage	2,612
Acres	0.11
Year Built	2013
Type	Residential
Sub-Type	Single Family Detached
Style	Two Story
Status	Pending

Community Information

Address	215 Palma Noce
Subdivision	MONTICELLO RANCH
City	San Antonio
County	Bexar
State	TX
Zip Code	78253-5874

Amenities

Amenities	Other - See Remarks
-----------	---------------------



Parking	Two Car Garage
Pool	None

Interior

Appliances	Security System (Owned)
Heating	Central
Cooling	One Central
Fireplaces	Not Applicable
# of Stories	2
Stories	2

Exterior

Exterior	Brick, Siding, Wood
Roof	Other
Construction	Pre-Owned
Foundation	Slab

School Information

District	Northside ISD
Elementary	Edmund Lieck
Middle	Bernal
High	William Brennan

Listing Details

Listing Office	Opendoor Brokerage LLC
----------------	------------------------

The data relating to real estate on this web site comes in part from the Internet Data Exchange program of the MLS of the San Antonio Board of Realtors®, and is updated as of September 10th, 2021 at 5:01pm CDT (date/time). IDX information is provided exclusively for consumers' personal, non-commercial use and may not be used for any purpose other than to identify prospective properties consumers may be interested in purchasing.