

\$4,750,000 - Hwy 281, Bulverde

MLS® #1548014

\$4,750,000

Bedroom, Bathroom, 998,482 sqft
Commercial on 22.92 Acres

N/A, Bulverde, TX

+/- 22.92 acres located at the NE corner of HWY 281 and Mustang Vista at the entrance of Johnson Ranch. Site has will established access on HWY 281 and Mustang Vista. Water and Sewer Available, Good Visibility, +/- 500 ft Frontage on HWY 281, +/- 1,000 ft Frontage on Mustang Vista.

Essential Information

MLS® #	1548014
Price	\$4,750,000
Square Footage	998,482
Acres	22.92
Type	Commercial
Sub-Type	Commercial Land
Status	Active

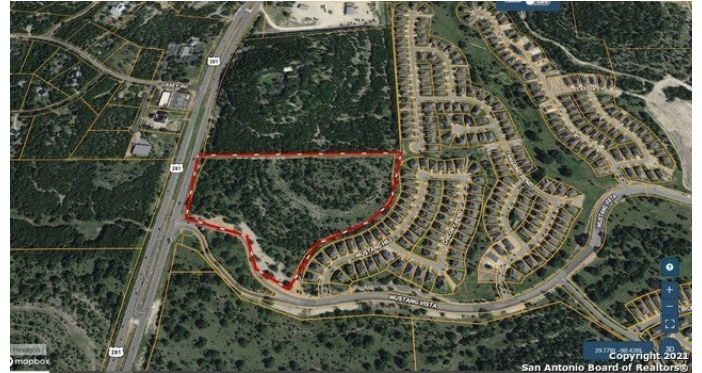
Community Information

Address	Hwy 281
Subdivision	N/A
City	Bulverde
County	Comal
State	TX
Zip Code	78163

Amenities

Utilities	Electricity, Water, Sewer
-----------	---------------------------

Additional Information



Zoning UNZONED& SMALL PORTION IN

Listing Details

Listing Office DK Realty Advisors, LLC

The data relating to real estate on this web site comes in part from the Internet Data Exchange program of the MLS of the San Antonio Board of Realtors®, and is updated as of September 10th, 2021 at 6:02pm CDT (date/time). IDX information is provided exclusively for consumers' personal, non-commercial use and may not be used for any purpose other than to identify prospective properties consumers may be interested in purchasing.