

# \$264,990 - 916 Nodding Nixie, Seguin

MLS® #1545481

## \$264,990

4 Bedroom, 2.00 Bathroom, 1,612 sqft  
Residential on 0.14 Acres

ARROYO RANCH, Seguin, TX

This beautiful new single story 1,612 sq ft home offering 4 bedrooms and 2 baths. This home features a foyer leading into the kitchen. The open kitchen overlooks the living and dining area and features spacious granite countertop and stainless steel appliances. Enjoy the main bedroom, bedroom 1, located off the family room. Featuring a huge walk in closet and large walk in shower. The Elgin comes with a covered rear patio giving view to the professionally irrigated and landscaped yard complete with Bermuda sod. This home includes our HOME IS CONNECTED base package which includes the Alexa Voice control, Front Door Bell, Front Door Deadbolt Lock, Home Hub, Light Switch, and Thermostat.

Built in 2021

## Essential Information

MLS® #	1545481
Price	\$264,990
Bedrooms	4
Bathrooms	2.00
Full Baths	2
Square Footage	1,612
Acres	0.14
Year Built	2021
Type	Residential
Sub-Type	Single Family Detached

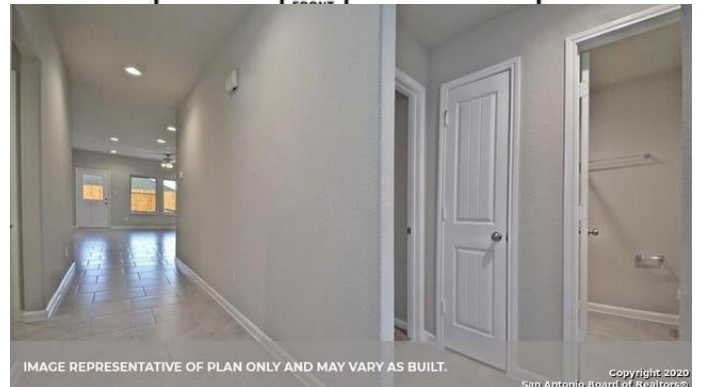
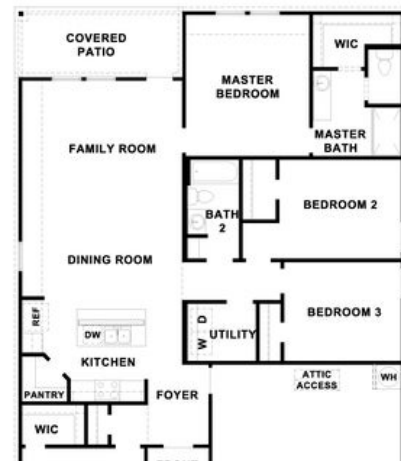


IMAGE REPRESENTATIVE OF PLAN ONLY AND MAY VARY AS BUILT.

Copyright 2020  
San Antonio Board of Realtors®

Style	One Story
Status	Pending

### Community Information

Address	916 Nodding Nixie
Subdivision	ARROYO RANCH
City	Seguin
County	Guadalupe
State	TX
Zip Code	78155

### Amenities

Amenities	Pool
Parking	Two Car Garage, Attached
Pool	None

### Interior

Interior	One Living Area, Eat-In Kitchen, Island Kitchen, Walk-In Pantry, Utility Room Inside, Open Floor Plan, All Bedrooms Downstairs, Laundry Main Level, Walk in Closets, Attic - Radiant Barrier Decking
Appliances	Washer Connection, Dryer Connection, Cook Top, Built-In Oven, Stove/Range, Disposal, Dishwasher, Smoke Alarm, Pre-Wired for Security, Electric Water Heater, Solid Counter Tops, Carbon Monoxide Detector, City Garbage service
Heating	Central
Cooling	One Central
Fireplaces	Not Applicable
# of Stories	1
Stories	1

### Exterior

Exterior	Brick, Rock/Stone Veneer, 1 Side Masonry
Exterior Features	Covered Patio, Sprinkler System, Double Pane Windows, Has Gutters
Roof	Composition
Construction	New
Foundation	Slab

### School Information

District	Seguin ISD
Elementary	Vogel Elementary

High

Seguin

## **Listing Details**

Listing Office

D.R. Horton Austin

The data relating to real estate on this web site comes in part from the Internet Data Exchange program of the MLS of the San Antonio Board of Realtors®, and is updated as of September 11th, 2021 at 11:47am CDT (date/time). IDX information is provided exclusively for consumers' personal, non-commercial use and may not be used for any purpose other than to identify prospective properties consumers may be interested in purchasing.