

\$4,250 - 603 Leigh St, San Antonio

MLS® #1540182

\$4,250

3 Bedroom, 3.00 Bathroom, 2,549 sqft

Rental on 0.08 Acres

VICTORIA COURTS, San Antonio, TX

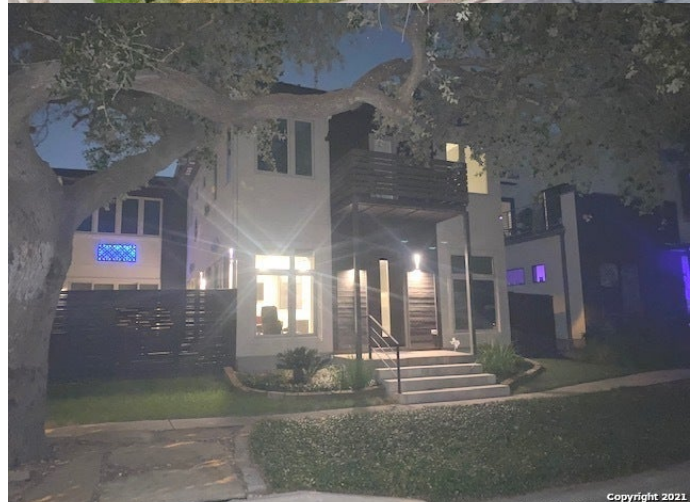
This Gorgeous Corner Lot Home was featured & filmed in an episode (novela) of "La Ley Del Amor." Also For Sale: OWNER FINANCE ONLY! Open concept: 3/3 "Imagine Home." Southtown Living in a two story contemporary style. Home features a Living Area plus an upstairs Loft, two Balconies, 2 Patios for outdoor entertaining with city views. Smart Home equipped with security system, cameras, 2 AC Units, Master Bath with Jacuzzi Garden Tub, 3 walk-in Showers, Reverse Osmosis at kitchen sink & fridge, Water Softener, tankless gas Water Heater. It's beautiful!

Built in 2016

Essential Information

MLS® #	1540182
Price	\$4,250
Bedrooms	3
Bathrooms	3.00
Full Baths	3
Square Footage	2,549
Acres	0.08
Year Built	2016
Type	Rental
Sub-Type	Single Family Detached
Style	Two Story, Contemporary
Status	Active

Community Information



Address	603 Leigh St
Subdivision	VICTORIA COURTS
City	San Antonio
County	Bexar
State	TX
Zip Code	78210-1462

Amenities

Amenities	Basketball Court, Playground, Sports Court
Parking	Two Car Garage
Pool	None

Interior

Interior	Two Living Area, Attic - Radiant Barrier Decking, High Ceilings, Island Kitchen, Liv/Din Combo, Laundry Upper Level, Loft, Open Floor Plan, Secondary Bedroom Down, Utility Room Inside, Walk in Closets
Appliances	2nd Floor Utility Room, Built-In Oven, City Garbage service, Ceiling Fans, Carbon Monoxide Detector, Disposal, Dryer Connection, Dryer, Dishwasher, Electric Water Heater, Garage Door Opener, Ice Maker Connection, Microwave Oven, Plumb for Water Softener, Pre-Wired for Security, Refrigerator, Self-Cleaning Oven, Water Softener (owned), Smoke Alarm, Security System (Owned), Washer Connection, Washer
Heating	Central
Cooling	Two Central
Fireplace	Yes
Fireplaces	Glass/Enclosed Screen, Living Room, One

Exterior

Exterior	4 Sides Masonry, Cement Fiber, Stucco
Exterior Features	Double Pane Windows, Deck/Balcony, Has Gutters, Patio Slab, Privacy Fence, Special Yard Lighting, Sprinkler System
Lot Description	City View, Corner
Roof	Metal
Construction	Pre-Owned
Foundation	Slab

School Information

District	San Antonio ISD
Elementary	Bonham
Middle	Page Middle

High

Brackenridge

Listing Details

Listing Office

VIP Realty

The data relating to real estate on this web site comes in part from the Internet Data Exchange program of the MLS of the San Antonio Board of Realtors®, and is updated as of September 10th, 2021 at 6:32pm CDT (date/time). IDX information is provided exclusively for consumers' personal, non-commercial use and may not be used for any purpose other than to identify prospective properties consumers may be interested in purchasing.