

\$209,900 - 212 Mar Hill, Seguin

MLS® #1537172

\$209,900

3 Bedroom, 2.00 Bathroom, 1,370 sqft
Residential on 0.14 Acres

Martindale Heights, Seguin, TX

SEGUIN'S NEWEST SUBDIVISION
MARTINDALE HEIGHTS NOW BUILDING
NEW HOMES! Spacious homes with plenty of
space for your family to enjoy. Awesome floor
plans with your choice of flooring, cabinets,
color, fixtures and more. Walking distance to
the park, easy access to IH 10, 123 Bypass
and Toll RD IH130 for your commute to San
Antonio, New Braunfels, San Marcos and
Austin. MODEL HOME NOW OPEN.

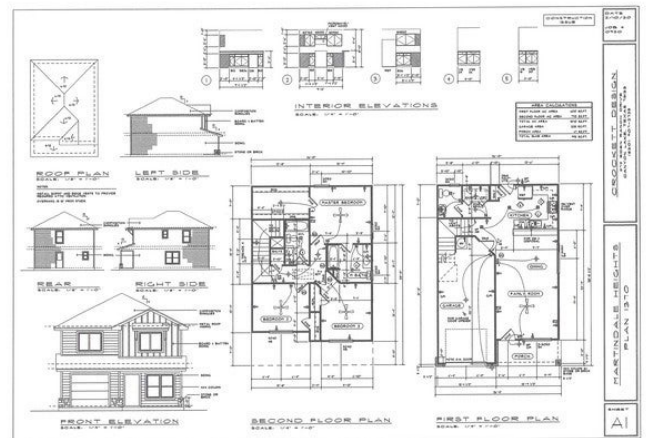
Built in 2021

Essential Information

MLS® #	1537172
Price	\$209,900
Bedrooms	3
Bathrooms	2.00
Full Baths	2
Square Footage	1,370
Acres	0.14
Year Built	2021
Type	Residential
Sub-Type	Single Family Detached
Style	One Story, Contemporary
Status	Pending SB

Community Information

Address	212 Mar Hill
Subdivision	Martindale Heights



City	Seguin
County	Guadalupe
State	TX
Zip Code	78155

Amenities

Amenities	Park/Playground
Parking	One Car Garage
Pool	None

Interior

Interior	One Living Area
Appliances	Ceiling Fans, Washer Connection, Dryer Connection, Stove/Range, Disposal, Dishwasher, Ice Maker Connection, Smoke Alarm, Electric Water Heater, Garage Door Opener, Vent Fan
Heating	Central
Cooling	One Central
Fireplaces	Not Applicable
# of Stories	1
Stories	1

Exterior

Exterior	Other
Roof	Composition
Construction	New
Foundation	Slab

School Information

District	Seguin ISD
Elementary	Patlan
Middle	Briesemiester
High	Seguin

Listing Details

Listing Office	Keller Williams Heritage
----------------	--------------------------

The data relating to real estate on this web site comes in part from the Internet Data Exchange program of the MLS of the San Antonio Board of Realtors®, and is updated as of September 11th, 2021 at 11:30am CDT (date/time). IDX information is provided exclusively for consumers' personal, non-commercial use and may not be used for any purpose other than to identify prospective properties consumers may be interested in purchasing.