

# \$394,170 - 3119 Apsley Park, Bulverde

MLS® #1527670

## \$394,170

5 Bedroom, 4.00 Bathroom, 3,383 sqft  
Residential on 0.11 Acres

VENTANA, Bulverde, TX

3119 Apsley Park DEC COMPLETION Atalon / Elevation C 3,389 sq ft, 5 bed, 3.5 bath, study, game room, media room, formal dining room Stainless Steel appliances, gas stove top, bay window at master bedroom, covered patio, tile in all wet areas & living room, granite countertop in kitchen, sprinkler system, 42" white cabinets throughout home, tankless water heater, 8ft mahogany front door, blinds, garage door opener. Nestled in the Texas hill country, Ventana offers country living with a touch of flare. A resort style pool and playground will offer fun for the entire family while the surrounding acres of green space provide peace and quiet. Located at Blanco Rd & 46 , between Boerne & 281 just minutes from Bulverde town center & the Guadalupe River State Park, this community has it all!

Built in 2020

## Essential Information

MLS® #	1527670
Price	\$394,170
Bedrooms	5
Bathrooms	4.00
Full Baths	3
Half Baths	1
Square Footage	3,383
Acres	0.11
Year Built	2020



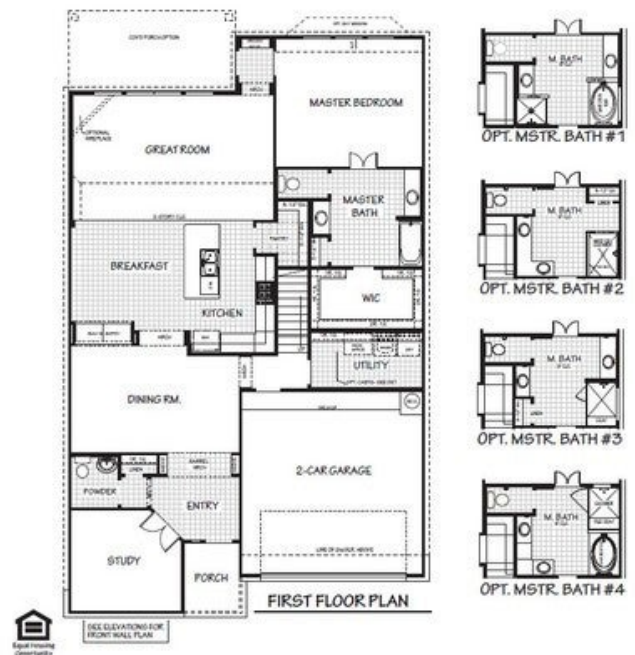
### The Atalon

3383 sq. ft. +/-



### The Atalon

3383 sq. ft. +/-



In a continuing effort to improve the homes we build, Bella Vista Homes reserves the right to change plans and specifications. © Copyright 2021  
All square footages and dimensions are approximate. Front windows will vary per elevation. Overall square footage may vary depending on specific lot conditions.  
San Antonio Board of Realtors®

Type	Residential
Sub-Type	Single Family Detached
Style	Two Story
Status	Pending

### Community Information

Address	3119 Apsley Park
Subdivision	VENTANA
City	Bulverde
County	Comal
State	TX
Zip Code	78163

### Amenities

Amenities	Pool, Clubhouse, Park/Playground, Jogging Trails, Sports Court
Parking	Two Car Garage
Pool	None

### Interior

Interior	Two Living Area, Separate Dining Room, Two Eating Areas, Island Kitchen, Breakfast Bar, Walk-In Pantry, Study/Library, Game Room, Media Room, Loft, Utility Room Inside, 1st Floor Lvl/No Steps, High Ceilings, Open Floor Plan, Laundry Room, Walk in Closets
Appliances	Ceiling Fans, Washer Connection, Dryer Connection, Microwave Oven, Stove/Range, Gas Cooking, Disposal, Dishwasher, Ice Maker Connection, Smoke Alarm, Gas Water Heater, Garage Door Opener, In Wall Pest Control, Plumb for Water Softener, Private Garbage Service
Heating	Zoned
Cooling	Zoned
Fireplaces	Not Applicable
# of Stories	2
Stories	2

### Exterior

Exterior	3 Sides Masonry, Stone/Rock, Siding
Exterior Features	Covered Patio, Privacy Fence, Sprinkler System, Double Pane Windows, Deck/Balcony, Wrought Iron Fence
Lot Description	Mature Trees (ext feat)
Roof	Composition
Construction	New

Foundation                      Slab

### **School Information**

District                      Comal ISD  
Middle                      Spring Branch  
High                      Smithson Valley

### **Listing Details**

Listing Office                      Bella Vista Homes

The data relating to real estate on this web site comes in part from the Internet Data Exchange program of the MLS of the San Antonio Board of Realtors®, and is updated as of September 10th, 2021 at 3:15pm CDT (date/time). IDX information is provided exclusively for consumers' personal, non-commercial use and may not be used for any purpose other than to identify prospective properties consumers may be interested in purchasing.