

# \$834,000 - 3872 Stapper Rd, St Hedwig

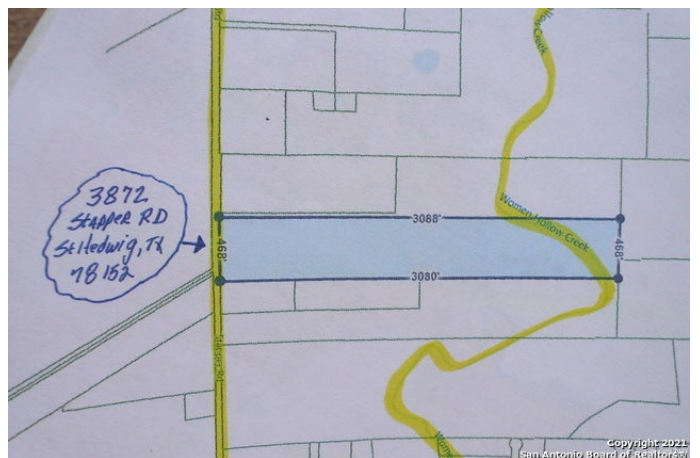
MLS® #1526169

**\$834,000**

Bedroom, Bathroom,  
Commercial on 32.93 Acres

N/A, St Hedwig, TX

32.93 Acres w/Low Ag Exempt taxes of only \$64.51 a yr in Historic St Hedwig Tx that is NOT in the City limits of st hedwig or schertz,..Thus NO RESTRICTIONS or City Taxes on the land,Labeled As "Potential Development Land" per Tax Records,468' of Paved Rd frontage x 3088' Deep,Backs up to Women Hollering Creek w/a Beautiful Parking Like Setting that is in the Floodplain but COULD make for a POSSIBLE POA Park Owners Association VS an HOA "IF" you wanted to create a Subd,Located in the Schertz Cibilo School Dist,EZ Access to FM 1518 & IH-10,Cps Power & Green Valley Water Co is available,Approx 3-mi from the Newest Subd's.. Hunters Way,Asher Place,Hallies Way & Heathers Place,Great location for a Subd that has a park like setting towards the back off the creek,Very Clean & Mostly level,Call 4 more details,survey plat & tour of the property,More land available,PLZ allow 2-day advance notice so seller can relocate animals...COUNTRY SETTING !!!



## Essential Information

MLS® #	1526169
Price	\$834,000
Acres	32.93
Type	Commercial
Sub-Type	Commercial Land
Status	Active

## Community Information

Address	3872 Stapper Rd
Subdivision	N/A
City	St Hedwig
County	Bexar
State	TX
Zip Code	78152

## Amenities

Utilities	None
-----------	------

## Additional Information

Zoning	R
--------	---

## Listing Details

Listing Office	Foster Family Real Estate
----------------	---------------------------

The data relating to real estate on this web site comes in part from the Internet Data Exchange program of the MLS of the San Antonio Board of Realtors®, and is updated as of September 11th, 2021 at 12:15pm CDT (date/time). IDX information is provided exclusively for consumers' personal, non-commercial use and may not be used for any purpose other than to identify prospective properties consumers may be interested in purchasing.