

\$975,000 - 4002 S Zapata Hwy, Laredo

MLS® #1523961

\$975,000

Bedroom, Bathroom, 74,052 sqft
Commercial on 1.70 Acres

N/A, Laredo, TX

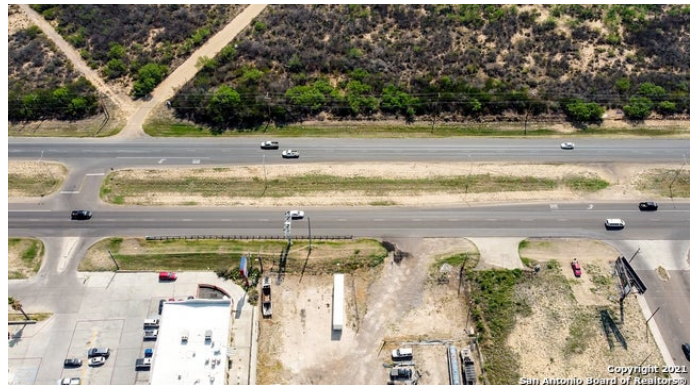
1.7 Acres on Busy Highway frontage off 83!
Conveniently located next to River South Center and Las Palmas Food Truck Park, with a Walmart less than 1000 ft away! Great traffic visibility, B4 zoning making the possibilities for your business almost endless! Travel Trailer/RV Park, Hospital, medical/dental clinic, school, daycare, civic club, church, office use, business park, bank, hotel/motel, heavy equipment rental, car sales, pharmacy/drug stores, tattoo parlor, almost all types of retail, restaurant (with alcohol sales), commercial parking lot, auto repair, movie theater, bowling alley, bingo parlor, skating rink, nightclubs, bars saloons, the list just keeps going!

Essential Information

MLS® #	1523961
Price	\$975,000
Square Footage	74,052
Acres	1.70
Type	Commercial
Sub-Type	Commercial Land
Status	Active

Community Information

Address	4002 S Zapata Hwy
Subdivision	N/A
City	Laredo



County	Webb
State	TX
Zip Code	78046

Amenities

Utilities	None
-----------	------

Additional Information

Zoning	B4
--------	----

Listing Details

Listing Office	AE Realty
----------------	-----------

The data relating to real estate on this web site comes in part from the Internet Data Exchange program of the MLS of the San Antonio Board of Realtors®, and is updated as of September 11th, 2021 at 12:30pm CDT (date/time). IDX information is provided exclusively for consumers' personal, non-commercial use and may not be used for any purpose other than to identify prospective properties consumers may be interested in purchasing.