

\$490,990 - 8490 Ivy Curl, Schertz

MLS® #1520001

\$490,990

4 Bedroom, 3.00 Bathroom, 2,241 sqft
Residential on 0.25 Acres

THE CROSSVINE, Schertz, TX

The Hamilton is a beautiful one story plan featuring four bedrooms, three bathrooms, the casual dining and a generous kitchen with walk-in pantry. A large family room with a warm fireplace, and four panel sliding back door, opening to beautiful large aged oak trees directly behind the home on one of our community green spaces.

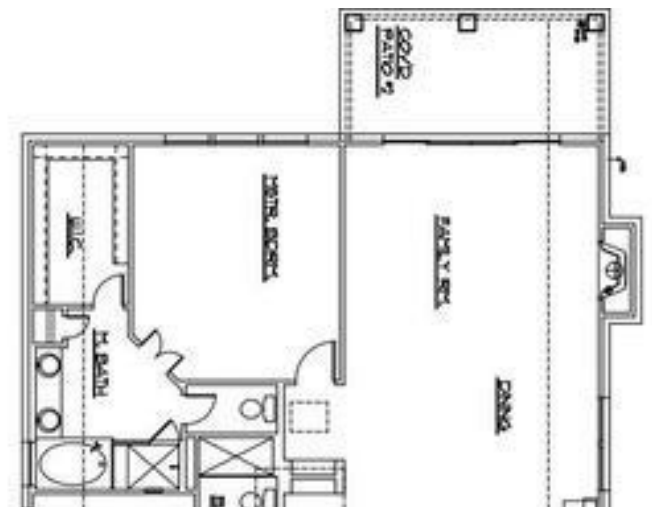
Built in 2021

Essential Information

MLS® #	1520001
Price	\$490,990
Bedrooms	4
Bathrooms	3.00
Full Baths	3
Square Footage	2,241
Acres	0.25
Year Built	2021
Type	Residential
Sub-Type	Single Family Detached
Style	One Story, Ranch
Status	Pending

Community Information

Address	8490 Ivy Curl
Subdivision	THE CROSSVINE
City	Schertz
County	Bexar



State	TX
Zip Code	78154

Amenities

Amenities	Bike Trails, Other - See Remarks, Park/Playground, Pool, Jogging Trails
Parking	Two Car Garage, Attached
Pool	None

Interior

Interior	One Living Area, Attic - Access only, Attic - Pull Down Stairs, Cable TV Available, Eat-In Kitchen, High Ceilings, High Speed Internet, Island Kitchen, Liv/Din Combo, Laundry Main Level, Laundry Room, Open Floor Plan, Pull Down Storage, Secondary Bedroom Down, Utility Room Inside, Walk in Closets
Appliances	Built-In Oven, Cook Top, Ceiling Fans, Carbon Monoxide Detector, Disposal, Dryer Connection, Dishwasher, Gas Cooking, Gas Water Heater, Ice Maker Connection, Microwave Oven, Plumb for Water Softener, Private Garbage Service, Pre-Wired for Security, In Wall Pest Control, Self-Cleaning Oven, Solid Counter Tops, Smoke Alarm, Washer Connection
Heating	1 Unit, Central
Cooling	One Central, Zoned
Fireplace	Yes
# of Fireplaces	1
Fireplaces	Family Room
# of Stories	1
Stories	1

Exterior

Exterior	4 Sides Masonry, Cement Fiber, Rock/Stone Veneer
Exterior Features	Covered Patio, Double Pane Windows, Has Gutters, Patio Slab, Ranch Fence, Sprinkler System, Wire Fence
Lot Description	County Vlew, On Greenbelt
Roof	Composition
Construction	New
Foundation	Slab

School Information

District	Schertz-Cibolo-Universal City ISD
Elementary	Rose Garden

Middle

Corbett

High

Clemens

Listing Details

Listing Office

Details Communities, Ltd.

The data relating to real estate on this web site comes in part from the Internet Data Exchange program of the MLS of the San Antonio Board of Realtors®, and is updated as of September 10th, 2021 at 5:47pm CDT (date/time). IDX information is provided exclusively for consumers' personal, non-commercial use and may not be used for any purpose other than to identify prospective properties consumers may be interested in purchasing.