

# \$371,420 - 10525 Bricewood Park, Helotes

MLS® #1519363

## \$371,420

4 Bedroom, 4.00 Bathroom, 2,450 sqft  
Residential on 0.11 Acres

BRICEWOOD, Helotes, TX

Looking for it All? This home has it. This is our new Roma Plan. The home features a total of 4 bedrooms and 3.5 bath. As soon as you walk into this home you have a spacious office. Your Kitchen, Living Room and Dining Room are ALL in 1 OPEN AREA. Master bedroom with large shower on 1st Floor. Once you go upstairs you have 3 larger than normal bedrooms, 2 full baths and an Awesome Game Room. Come in and do you final Selections on Your Home. November 2021 Completion.

Built in 2021

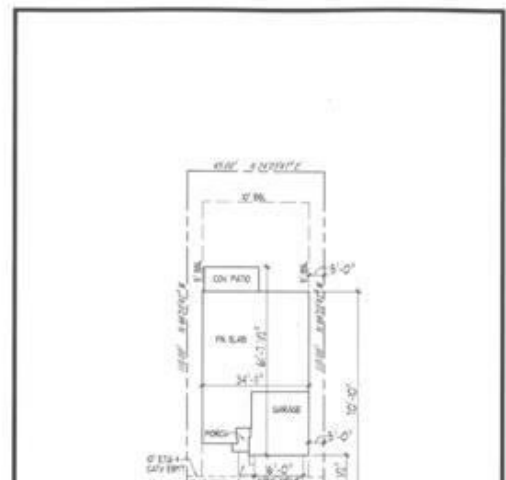
## Essential Information

MLS® #	1519363
Price	\$371,420
Bedrooms	4
Bathrooms	4.00
Full Baths	3
Half Baths	1
Square Footage	2,450
Acres	0.11
Year Built	2021
Type	Residential
Sub-Type	Single Family Detached
Style	Two Story
Status	Pending

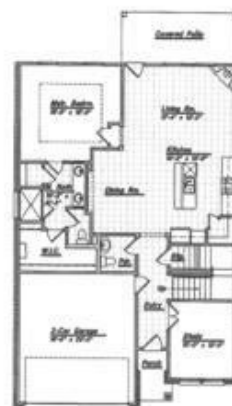
## Community Information



Copyright 2021  
San Antonio Board of Realtors®



Plan 2450



First Floor Plan



Second Floor Plan

Structure plans are solid suggestions and may vary from actual plan. Square footage, room dimensions, prices, specifications, materials, and availability of homes by community may vary, and are subject to change without notice.



Copyright 2021  
San Antonio Board of Realtors®

Address	10525 Bricewood Park
Subdivision	BRICEWOOD
City	Helotes
County	Bexar
State	TX
Zip Code	78023

### **Amenities**

Amenities	Park/Playground, Jogging Trails, Basketball Court
Parking	Two Car Garage, Attached
Pool	None

### **Interior**

Interior	Island Kitchen, Walk-In Pantry, Open Floor Plan, Cable TV Available, Two Eating Areas, Two Living Area, Game Room, High Ceilings, Study/Library, Utility Room Inside
Appliances	Ceiling Fans, Washer Connection, Dryer Connection, Stove/Range, Gas Cooking, Disposal, Dishwasher, Vent Fan, Smoke Alarm, Gas Water Heater, In Wall Pest Control, Plumb for Water Softener, Garage Door Opener, Ice Maker Connection, Security System (Owned)
Heating	Central
Cooling	One Central, Zoned
Fireplaces	Not Applicable
# of Stories	2
Stories	2

### **Exterior**

Exterior	3 Sides Masonry, Cement Fiber
Exterior Features	Covered Patio, Double Pane Windows, Privacy Fence, Sprinkler System, Mature Trees
Roof	Composition
Construction	New
Foundation	Slab

### **School Information**

District	Northside ISD
Elementary	FIELDS
Middle	FOLKS
High	John Marshall Harlan HS

### **Listing Details**

Listing Office

Move Up America

The data relating to real estate on this web site comes in part from the Internet Data Exchange program of the MLS of the San Antonio Board of Realtors®, and is updated as of September 10th, 2021 at 6:16pm CDT (date/time). IDX information is provided exclusively for consumers' personal, non-commercial use and may not be used for any purpose other than to identify prospective properties consumers may be interested in purchasing.