

\$399,900 - 14740 Iris Glen, San Antonio

MLS® #1508976

\$399,900

3 Bedroom, 3.00 Bathroom, 1,918 sqft
Residential on 0.14 Acres

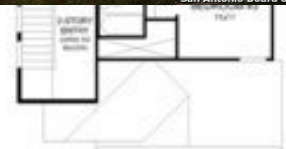
LADERA ENCLAVE, San Antonio, TX

Perry Homes New Construction! Two-story entry leads to open family room, dining area and kitchen. Family room features wall of windows. Kitchen features large corner walk-in pantry and generous island with built-in seating space. A half bath and walk-in closet complete downstairs. Second-floor primary suite. Double doors lead to primary bath with dual vanities, separate glass-enclosed shower and two walk-in closets. Two secondary bedrooms and a full bath complete upstairs. Abundant closet space and natural light throughout. Covered backyard patio. Two-car garage.

Built in 2021

Essential Information

MLS® #	1508976
Price	\$399,900
Bedrooms	3
Bathrooms	3.00
Full Baths	2
Half Baths	1
Square Footage	1,918
Acres	0.14
Year Built	2021
Type	Residential
Sub-Type	Single Family Detached
Style	Two Story, Traditional
Status	Pending



Community Information

Address	14740 Iris Glen
Subdivision	LADERA ENCLAVE
City	San Antonio
County	Bexar
State	TX
Zip Code	78245

Amenities

Amenities	Pool, Clubhouse, Park/Playground, Jogging Trails
Parking	Two Car Garage, Attached
Pool	None

Interior

Interior	One Living Area, Eat-In Kitchen, Two Eating Areas, Island Kitchen, Breakfast Bar, Walk-In Pantry, Utility Room Inside, High Ceilings, Open Floor Plan, Cable TV Available, High Speed Internet, Walk in Closets, All Bedrooms Upstairs, Pull Down Storage, Separate Dining Room
Appliances	Ceiling Fans, Washer Connection, Dryer Connection, Microwave Oven, Stove/Range, Gas Cooking, Disposal, Dishwasher, Vent Fan, Smoke Alarm, Pre-Wired for Security, Garage Door Opener, Plumb for Water Softener, Carbon Monoxide Detector
Heating	Central
Cooling	One Central
Fireplaces	Not Applicable
# of Stories	2
Stories	2

Exterior

Exterior	3 Sides Masonry, Brick
Exterior Features	Covered Patio, Sprinkler System, Has Gutters, Patio Slab
Lot Description	On Greenbelt
Roof	Composition
Construction	New
Foundation	Slab

School Information

District	Medina ISD
Elementary	Potranco
Middle	Loma Alta

High

Medina Valley

Listing Details

Listing Office

Perry Development Management

The data relating to real estate on this web site comes in part from the Internet Data Exchange program of the MLS of the San Antonio Board of Realtors®, and is updated as of September 10th, 2021 at 6:32pm CDT (date/time). IDX information is provided exclusively for consumers' personal, non-commercial use and may not be used for any purpose other than to identify prospective properties consumers may be interested in purchasing.