

\$211,000 - 6506 Tempo Switch, San Antonio

MLS® #1506624

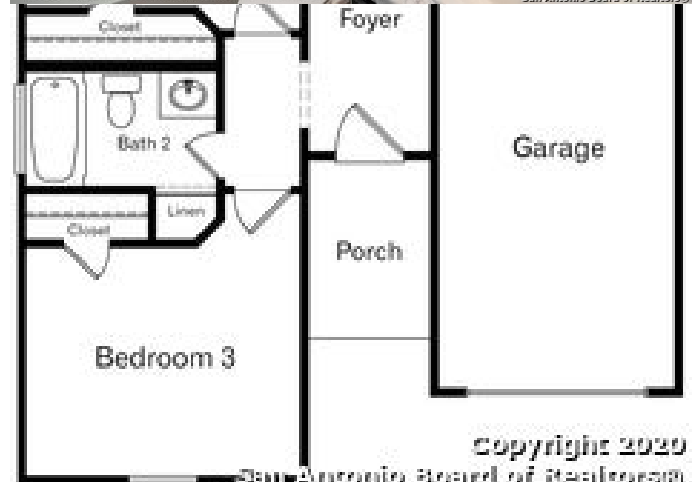
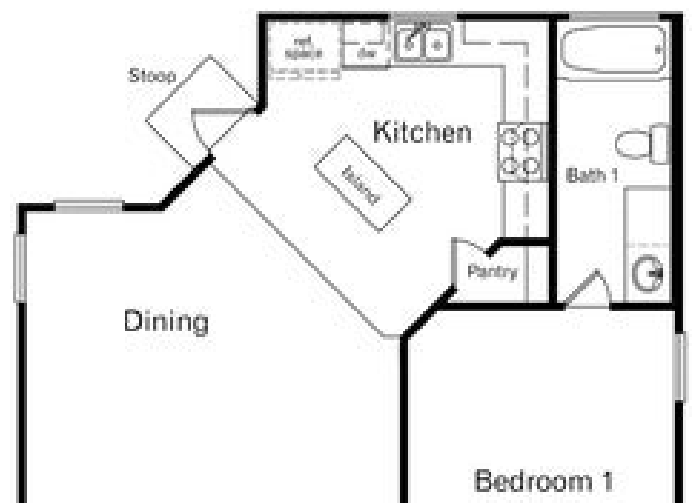
\$211,000

3 Bedroom, 2.00 Bathroom, 1,310 sqft
Residential on 0.00 Acres

WHISPER FALLS, San Antonio, TX

Welcome home! The Mabry is a single-story, 1310 sq. ft., 3 bedroom, 2 bathroom floor plan, designed to provide you and your family a comfortable place to call home. The inviting entryway leads to a private hallway connecting the two secondary bedrooms and a full bath. The long foyer opens up into the spacious living area. The large dining area connects to the spacious kitchen. Enjoy preparing meals and spending time together gathered around the kitchen island. The bedroom 1 suite is located off the foyer. It includes a large walk-in closet with built-in shelving and a relaxing ensuite. You'll enjoy added security in your new home with our Home is Connected features. Using one central hub that talks to all the devices in your home, you can control the lights, thermostat and locks, all from your cellular device. Additional features include Mohawk Revwood flooring in kitchen, wet areas, and living room per plan, black appliances, granite kitchen and bathroom counter tops and flat panel maple cabinets.

Whisper Falls is a new community located on the southwest side of San Antonio, near Lackland Air Force Base and SeaWorld. Floor plans vary from two to five bedrooms and include granite countertops (per plan), black or stainless steel appliances (per plan), 9-foot ceilings and much more. These spacious floor plans range from 945 square feet to over 2,600 square feet. Whisper Falls new construction homes will feature D.R. Horton's new smart home system, Home Is



Connected, ensuring security and peace of mind. Don't miss out on these new homes in a great location and at a great place.

Highlights Include: Medina Valley

Independent School District Just minutes away from Lackland Air Force Base Easy

Access to 1604, Loop 410 & 151 *USDA

100% Financing Available if you qualify

Built in 2021

Essential Information

MLS® #	1506624
Price	\$211,000
Bedrooms	3
Bathrooms	2.00
Full Baths	2
Square Footage	1,310
Acres	0.00
Year Built	2021
Type	Residential
Sub-Type	Single Family Detached
Style	One Story, Traditional
Status	Pending

Community Information

Address	6506 Tempo Switch
Subdivision	WHISPER FALLS
City	San Antonio
County	Bexar
State	TX
Zip Code	78252

Amenities

Amenities	Pool, Clubhouse, Park/Playground, Jogging Trails, Sports Court, Bike Trails, Basketball Court
Parking	One Car Garage
Pool	None

Interior

Interior	One Living Area, Island Kitchen, Breakfast Bar, Utility Room Inside, Open Floor Plan, Cable TV Available, High Speed Internet, Laundry Room, Attic - Pull Down Stairs
Appliances	Washer Connection, Dryer Connection, Self-Cleaning Oven, Stove/Range, Gas Cooking, Disposal, Dishwasher, Ice Maker Connection, Smoke Alarm, Gas Water Heater, Carbon Monoxide Detector
Heating	Central
Cooling	One Central
Fireplaces	Not Applicable
# of Stories	1
Stories	1

Exterior

Exterior	Brick, Siding, Cement Fiber
Exterior Features	Sprinkler System
Roof	Composition
Construction	New
Foundation	Slab

School Information

District	Medina Valley ISD
Elementary	Lacoste Elementary
Middle	Medina Valley
High	Medina Valley

Listing Details

Listing Office	Keller Williams Heritage
----------------	--------------------------

The data relating to real estate on this web site comes in part from the Internet Data Exchange program of the MLS of the San Antonio Board of Realtors®, and is updated as of September 10th, 2021 at 7:16pm CDT (date/time). IDX information is provided exclusively for consumers' personal, non-commercial use and may not be used for any purpose other than to identify prospective properties consumers may be interested in purchasing.