

\$493,172 - 1711 Roaring Fork, San Antonio

MLS® #1505582

\$493,172

4 Bedroom, 3.00 Bathroom, 2,619 sqft
Residential on 0.18 Acres

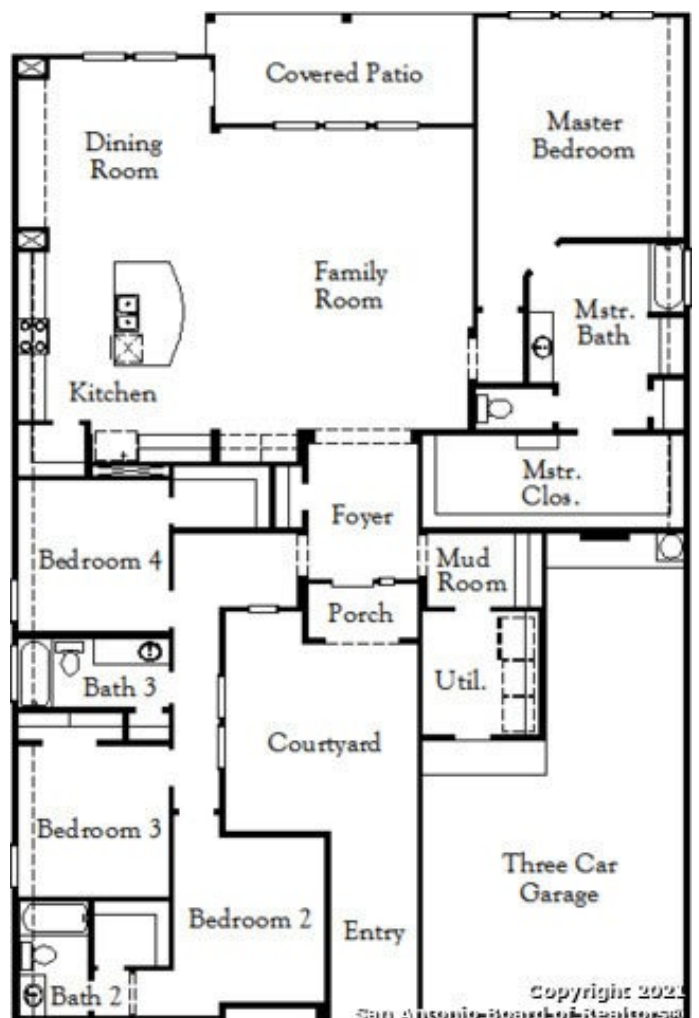
KINDER RANCH, San Antonio, TX

You will absolutely fall in love when you pull up to this gorgeous home in beautiful Kinder Ranch. This home boasts an exquisitely upgraded front stone elevation that complements the functional, private courtyard outside the entryway of the home. As you enter, you will be swept away by the very large open concept floorplan that boasts hardwood floors, granite countertops, an upgraded primary bath and four sides masonry. All rooms are well appointed with ample space and the secondary bedrooms are located on the opposite side of the home as the primary suite. This is truly is a one-of-a-kind home, come visit today. We'll see you in Kinder Ranch!

Built in 2020

Essential Information

MLS® #	1505582
Price	\$493,172
Bedrooms	4
Bathrooms	3.00
Full Baths	3
Square Footage	2,619
Acres	0.18
Year Built	2020
Type	Residential
Sub-Type	Single Family Detached
Style	One Story



Status Pending

Community Information

Address 1711 Roaring Fork
Subdivision KINDER RANCH
City San Antonio
County Bexar
State TX
Zip Code 78260

Amenities

Amenities Pool, Controlled Access
Parking Two Car Garage, Attached
Pool None

Interior

Interior One Living Area, Eat-In Kitchen, Island Kitchen, Utility Room Inside, Secondary Bedroom Down, High Ceilings, Open Floor Plan, Cable TV Available, High Speed Internet, 1st Floor Lvl/No Steps, Liv/Din Combo, Pull Down Storage, Study/Library, Walk-In Pantry
Appliances Ceiling Fans, Washer Connection, Dryer Connection, Microwave Oven, Gas Cooking, Disposal, Dishwasher, Ice Maker Connection, Smoke Alarm, Gas Water Heater, Plumb for Water Softener, Attic Fan, Built-In Oven, Cook Top, Pre-Wired for Security, In Wall Pest Control, Solid Counter Tops
Heating Central
Cooling One Central
Fireplaces Not Applicable
of Stories 1
Stories 1

Exterior

Exterior Brick, 4 Sides Masonry
Exterior Features Covered Patio, Privacy Fence, Sprinkler System, Double Pane Windows, Mature Trees
Roof Composition
Construction New
Foundation Slab

School Information

District	Comal ISD
Middle	Spring Branch
High	Smithson Valley

Listing Details

Listing Office	Gatehouse Properties
----------------	----------------------

The data relating to real estate on this web site comes in part from the Internet Data Exchange program of the MLS of the San Antonio Board of Realtors®, and is updated as of September 10th, 2021 at 7:00pm CDT (date/time). IDX information is provided exclusively for consumers' personal, non-commercial use and may not be used for any purpose other than to identify prospective properties consumers may be interested in purchasing.