

\$1,649,000 - 28 Arnold Palmer, San Antonio

MLS® #1504455

\$1,649,000

7 Bedroom, 7.00 Bathroom, 8,005 sqft
Residential on 0.45 Acres

THE DOMINION, San Antonio, TX

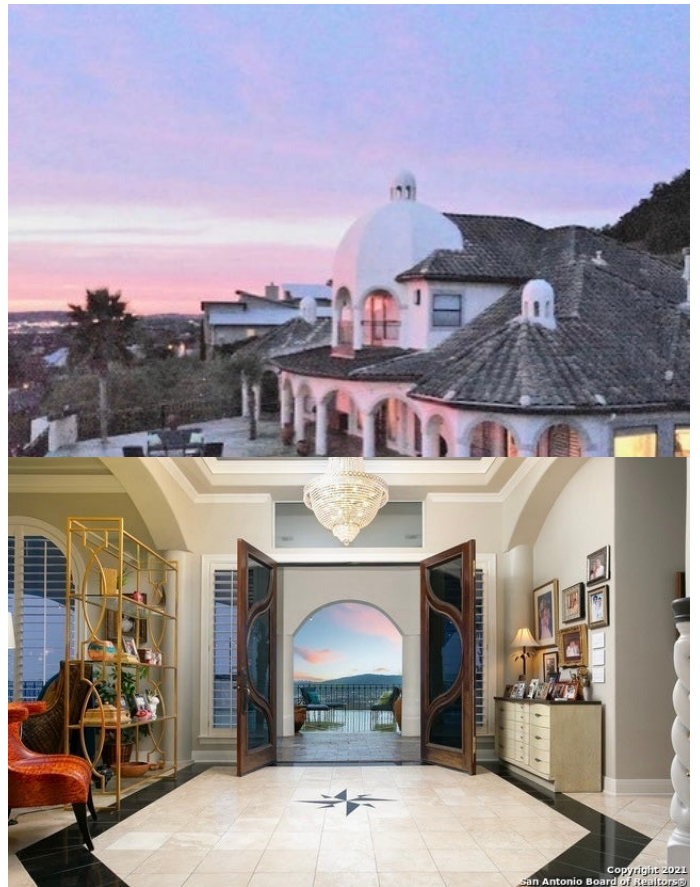
Grand Dominion Mansion with views not only overlooking the hill country, but also the beautiful city skyline! This exquisite home is on three levels. The master bedroom is on the main floor along with the kitchen, breakfast and dining, the secondary bedrooms are below. Gorgeous majestic balcony with rock detail allows over 2,000 sq ft of space to enjoy the breathtaking views. Your friends will look forward to celebrating New Years and Fourth of July with you because you can see so many fireworks from the comfort of your home!

Built in 1998

Essential Information

MLS® #	1504455
Price	\$1,649,000
Bedrooms	7
Bathrooms	7.00
Full Baths	6
Half Baths	1
Square Footage	8,005
Acres	0.45
Year Built	1998
Type	Residential
Sub-Type	Single Family Detached
Style	3 or More, Mediterranean
Status	Active Option

Community Information



Address	28 Arnold Palmer
Subdivision	THE DOMINION
City	San Antonio
County	Bexar
State	TX
Zip Code	78257-1723

Amenities

Amenities	Controlled Access, Guarded Access, Park/Playground
Has Pool	Yes
Pool	In Ground Pool

Interior

Interior	Two Living Area, Cable TV Available, Eat-In Kitchen, High Ceilings, Island Kitchen, Laundry in Closet, Laundry Lower Level, Laundry Main Level, Loft, Maid's Quarters, Open Floor Plan, Study/Library, Utility Room Inside, Walk in Closets
Appliances	Built-In Oven, Chandelier, Cook Top, Ceiling Fans, Custom Cabinets, Disposal, Dryer Connection, Dishwasher, Gas Grill, Gas Cooking, Microwave Oven, Pre-Wired for Security, Refrigerator, Self-Cleaning Oven, Stove/Range, Washer Connection
Heating	Central
Cooling	Three+ Central
Fireplace	Yes
# of Fireplaces	1
Fireplaces	Dining Room, One
Stories	3+

Exterior

Exterior	Stucco, Stone/Rock
Exterior Features	Bar-B-Que Pit/Grill, Covered Patio, Deck/Balcony, Gas Grill, Has Gutters, Privacy Fence, Mature Trees
Lot Description	1/4 - 1/2 Acre, City View, County View, Sloping
Roof	Tile
Construction	Pre-Owned
Foundation	Slab

School Information

District	Northside ISD
Elementary	Leon Springs

Middle	Rawlinson
High	Clark

Listing Details

Listing Office	Home Team of America
----------------	----------------------

The data relating to real estate on this web site comes in part from the Internet Data Exchange program of the MLS of the San Antonio Board of Realtors®, and is updated as of September 10th, 2021 at 3:36pm CDT (date/time). IDX information is provided exclusively for consumers' personal, non-commercial use and may not be used for any purpose other than to identify prospective properties consumers may be interested in purchasing.