

\$1,776,000 - 1988 Bentwood Drive, Floresville

MLS® #1497887

\$1,776,000

0 Bedroom, 0.00 Bathroom,
Farms and Ranches on 201.34 Acres

N/A, Floresville, TX

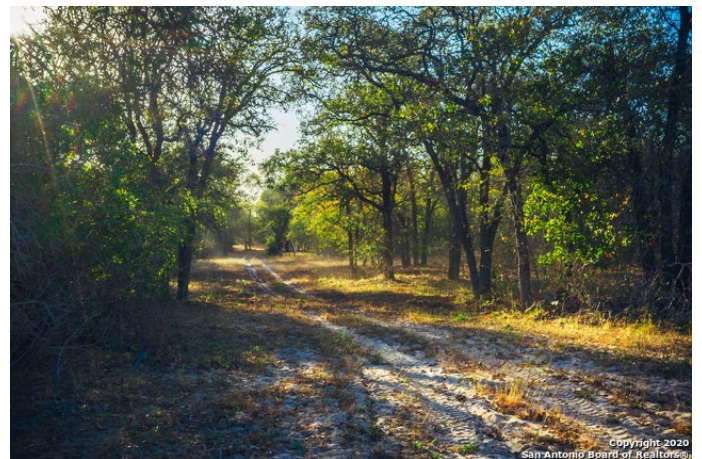
Perfect for escaping into the country, yet less than 30 minutes from downtown San Antonio, this working cattle ranch is a beautiful blend of native Oak/Hickory forests and open prairie. Ideal for building your dream home as well as an excellent investment or development property! This is one of the last large undeveloped tracts in the area and has easy access from 2 different paved roads, great school district, as well as municipal water & electric. Meanwhile, this historic ranch was crossed by the Alamo-Goliad Road and has verified history dating to the 1700s. There are abundant deer, turkey, and other wildlife, with fantastic scenery and fine views! **AWESOME POTENTIAL for INVESTMENT or DEVELOPMENT**

Essential Information

MLS® #	1497887
Price	\$1,776,000
Bathrooms	0.00
Acres	201.34
Type	Farms and Ranches
Sub-Type	Farm/Ranch
Status	Pending

Community Information

Address	1988 Bentwood Drive
Subdivision	N/A



City	Floresville
County	Wilson
State	TX
Zip Code	78114

Amenities

Utilities	Cable TV, Electricity, High Speed Internet, Telephone, Water
-----------	--

School Information

District	Floresville ISD
Elementary	Floresville
Middle	Floresville
High	Floresville

Listing Details

Listing Office	Capitol Ranch Real Estate
----------------	---------------------------

The data relating to real estate on this web site comes in part from the Internet Data Exchange program of the MLS of the San Antonio Board of Realtors®, and is updated as of September 11th, 2021 at 11:30am CDT (date/time). IDX information is provided exclusively for consumers' personal, non-commercial use and may not be used for any purpose other than to identify prospective properties consumers may be interested in purchasing.