

\$325,000 - 9293 I-10 E, Converse

MLS® #1414315

\$325,000

Bedroom, Bathroom, 45,230 sqft
Commercial on 0.00 Acres

N/A, Converse, TX

Great investment opportunity own a piece of IH 10 corner lot frontage 150Ft+/- approximately 1 acre +/- zoned C3 on 3 lots facing HWY and MH for 2 residential lots. all lots sold together. west bound on I-10 loop 1604 Exit and East bound Exit 1516 exit.

Essential Information

MLS® #	1414315
Price	\$325,000
Square Footage	45,230
Acres	0.00
Type	Commercial
Sub-Type	Other: Motel/Hotel/MH Prk
Status	Active

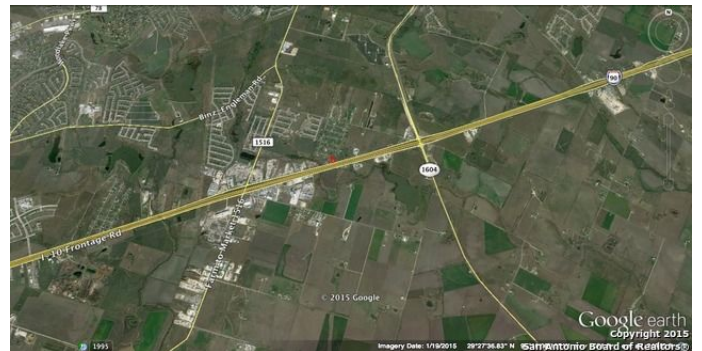
Community Information

Address	9293 I-10 E
Subdivision	N/A
City	Converse
County	Bexar
State	TX
Zip Code	78109

Amenities

Utilities	Electricity, Water, Septic
Parking Spaces	20

Interior



Heating None

Cooling None

Exterior

Construction Other

School Information

District Not Applicable ISD

Additional Information

Zoning C3 AND MH

Listing Details

Listing Office Brohill Realty Ltd

The data relating to real estate on this web site comes in part from the Internet Data Exchange program of the MLS of the San Antonio Board of Realtors®, and is updated as of September 11th, 2021 at 12:15pm CDT (date/time). IDX information is provided exclusively for consumers' personal, non-commercial use and may not be used for any purpose other than to identify prospective properties consumers may be interested in purchasing.