

\$1,050,000 - 2536 I-35 N, Natalia

MLS® #1413100

\$1,050,000

Bedroom, Bathroom, 345,736 sqft
Commercial on 7.94 Acres

N/A, Natalia, TX

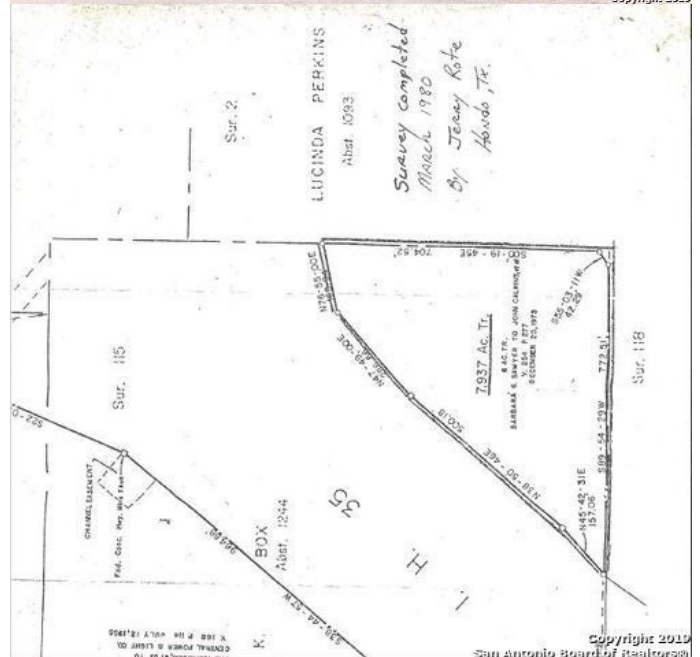
Highly visible and accessible property with direct access from northbound IH 35 exit ramp and frontage on CR 6722. Excellent property for a gas station, convenience store, restaurant, hotel, car lot, manufactured home sales, or a variety of other commercial possibilities. Just outside Natalia city limits, so no restrictions and no city taxes. Portable buildings on site are negotiable. Large Love's Travel Center is located just across IH 35. Benson City water meter, private water well and electricity on site

Essential Information

MLS® #	1413100
Price	\$1,050,000
Square Footage	345,736
Acres	7.94
Type	Commercial
Sub-Type	Commercial Land
Status	Active

Community Information

Address	2536 I-35 N
Subdivision	N/A
City	Natalia
County	Medina
State	TX
Zip Code	78059



Amenities

Utilities Electricity, Water

Additional Information

Zoning OCL

Listing Details

Listing Office RE/MAX River Cities

The data relating to real estate on this web site comes in part from the Internet Data Exchange program of the MLS of the San Antonio Board of Realtors®, and is updated as of September 11th, 2021 at 12:15pm CDT (date/time). IDX information is provided exclusively for consumers' personal, non-commercial use and may not be used for any purpose other than to identify prospective properties consumers may be interested in purchasing.