

# \$996,000 - 201 His Way, Spring Branch

MLS® #1343328

## \$996,000

3 Bedroom, 2.00 Bathroom, 2,080 sqft  
Residential on 9.39 Acres

NONE, Spring Branch, TX

Two houses on top of a hill with a long distance view and on-going breezes. Check out this property located near retail, schools, houses, and other commercial properties. High visibility along commercial strip on HWY 46. Main house and manufactured home. In-ground pool, pool house, well, paved driveway, and 2 septic tanks. Property slopes in the front, but flattens out at the top. Walking path along fenced property line allows you to view the acreage. Schedule your showing today!

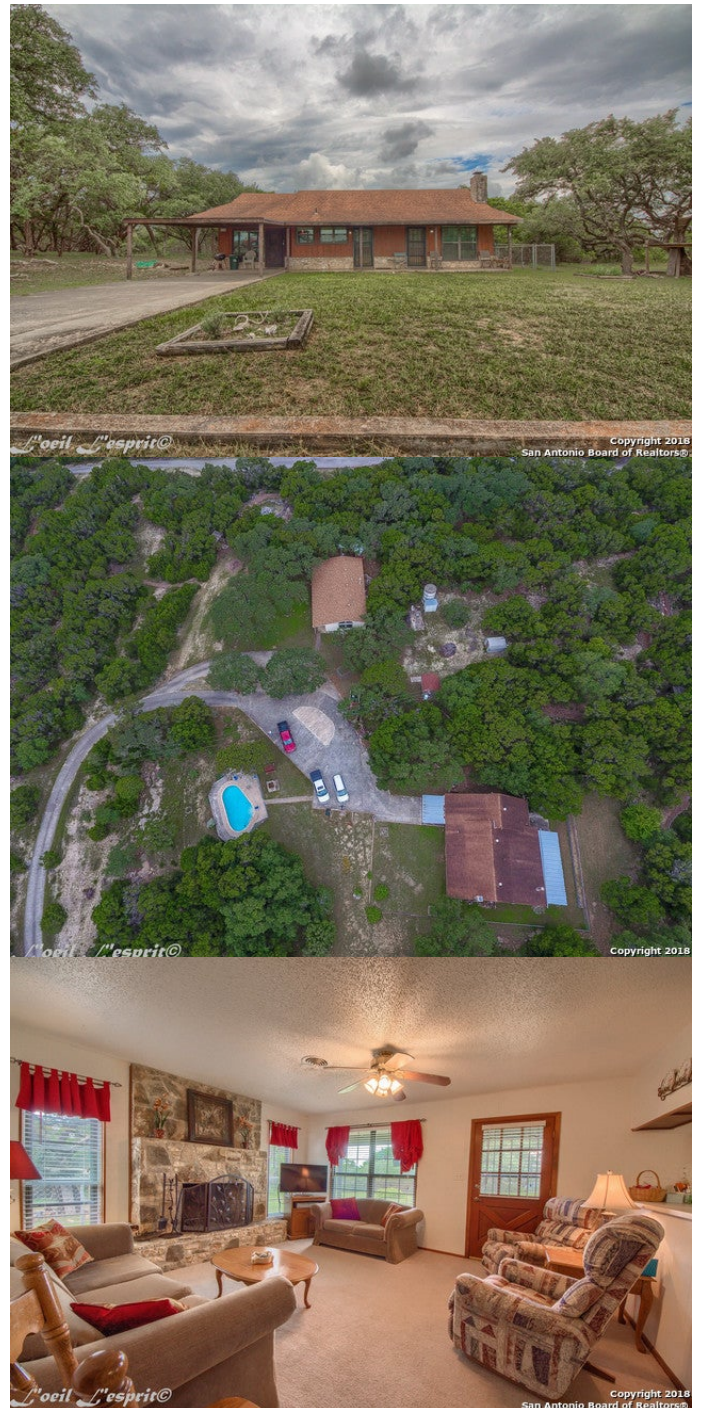
Built in 1973

## Essential Information

MLS® #	1343328
Price	\$996,000
Bedrooms	3
Bathrooms	2.00
Full Baths	2
Square Footage	2,080
Acres	9.39
Year Built	1973
Type	Residential
Sub-Type	Single Family Detached
Style	One Story, Traditional
Status	Active

## Community Information

Address 201 His Way



Subdivision	NONE
City	Spring Branch
County	Comal
State	TX
Zip Code	78070-6718

### **Amenities**

Amenities	None
Parking	None/Not Applicable
Has Pool	Yes
Pool	Fenced Pool, In Ground Pool

### **Interior**

Interior	1st Floor Lvl/No Steps, One Living Area, All Bedrooms Downstairs, Island Kitchen, Liv/Din Combo, Laundry Main Level, Open Floor Plan, Secondary Bedroom Down, Telephone, Utility Room Inside
Appliances	Ceiling Fans, Carbon Monoxide Detector, Disposal, Dryer Connection, Dishwasher, Private Garbage Service, Propane Water Heater, Smoke Alarm, Stove/Range, Vent Fan, Washer Connection
Heating	Central
Cooling	One Central
Fireplace	Yes
# of Fireplaces	1
Fireplaces	Living Room, One, Wood Burning
# of Stories	1
Stories	1

### **Exterior**

Exterior	Wood
Exterior Features	Bar-B-Que Pit/Grill, Dog Run Kennel, Storage Building/Shed, Mature Trees
Lot Description	5 - 14 Acres, Bluff View, County View, Horses Allowed, Irregular, Level, Mature Trees (ext feat), Partially Wooded, Secluded, Sloping
Roof	Composition
Construction	Pre-Owned
Foundation	Slab

### **School Information**

District	Comal ISD
Elementary	Arlon Seay

Middle

Spring Branch

High

Smithson Valley

## **Listing Details**

Listing Office

Reliance Residential Realty-BL

The data relating to real estate on this web site comes in part from the Internet Data Exchange program of the MLS of the San Antonio Board of Realtors®, and is updated as of September 10th, 2021 at 6:32pm CDT (date/time). IDX information is provided exclusively for consumers' personal, non-commercial use and may not be used for any purpose other than to identify prospective properties consumers may be interested in purchasing.