

# \$333,000 - 00 S Hwy 16, Bandera

MLS® #1329542

## \$333,000

Bedroom, Bathroom, 137,650 sqft  
Commercial on 3.16 Acres

N/A, Bandera, TX

Fantastic!! Hwy 16, 450' Paved Road Frontage with super easy access. Level Terrain, Located between Pipe Creek and Bandera, near Bear Creek Road and the entrance to Cielo Rio Ranch. Multi-use commercial and residential.

## Essential Information

MLS® #	1329542
Price	\$333,000
Square Footage	137,650
Acres	3.16
Type	Commercial
Sub-Type	Commercial Land
Status	Active

## Community Information

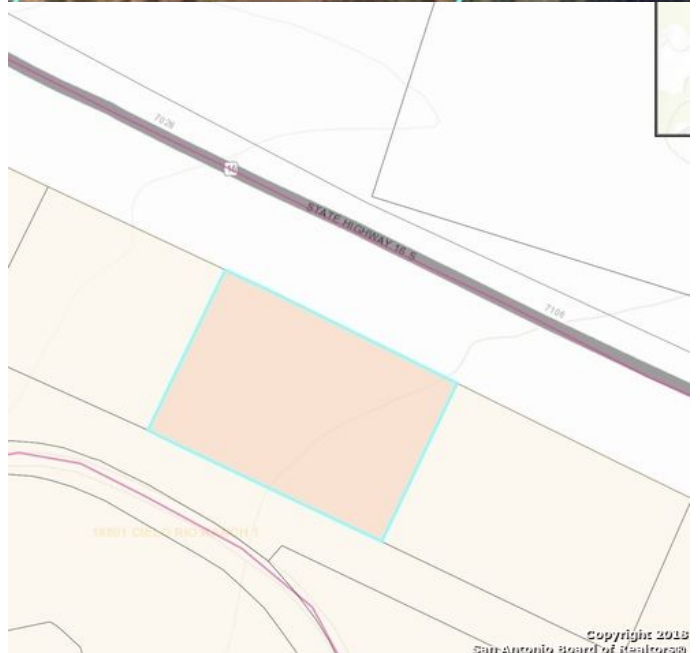
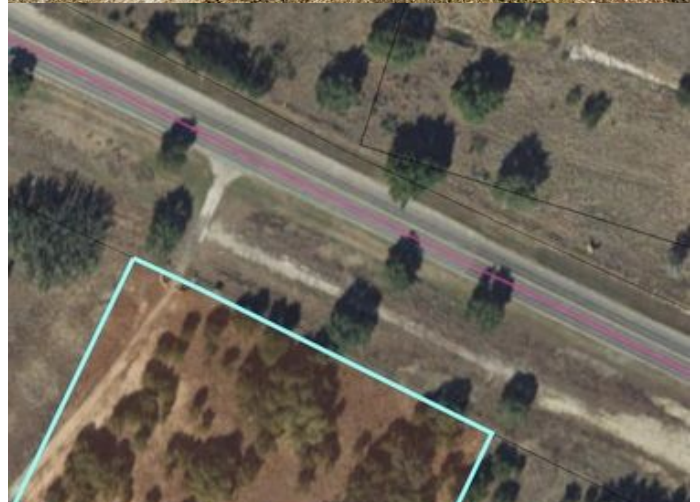
Address	00 S Hwy 16
Subdivision	N/A
City	Bandera
County	Bandera
State	TX
Zip Code	78003

## Amenities

Utilities	Electricity, Septic
-----------	---------------------

## Additional Information

Zoning	COMMERCIAL
--------	------------



## Listing Details

Listing Office      Tree of Life Real Estate Group

The data relating to real estate on this web site comes in part from the Internet Data Exchange program of the MLS of the San Antonio Board of Realtors®, and is updated as of September 11th, 2021 at 11:47am CDT (date/time). IDX information is provided exclusively for consumers' personal, non-commercial use and may not be used for any purpose other than to identify prospective properties consumers may be interested in purchasing.