

\$1,184,950 - 14260 S Us Highway 281, San Antonio

MLS® #1249702

\$1,184,950

Bedroom, Bathroom, 794,099 sqft
Lots and Acreage on 18.23 Acres

N/A, San Antonio, TX

18.23 acres of land on S US Hwy 281. Just south of SE Loop 410. Adjacent to Mission del Lago master planned development. Approximately 6.4 miles to Texas A & M San Antonio, 10.8 miles to Texas Toyota Plant, 9 miles to the Brooks City Base Development, 7.6 miles to Palo Alto College, and 15 miles from downtown San Antonio. This is a great opportunity for US Highway frontage.

Essential Information

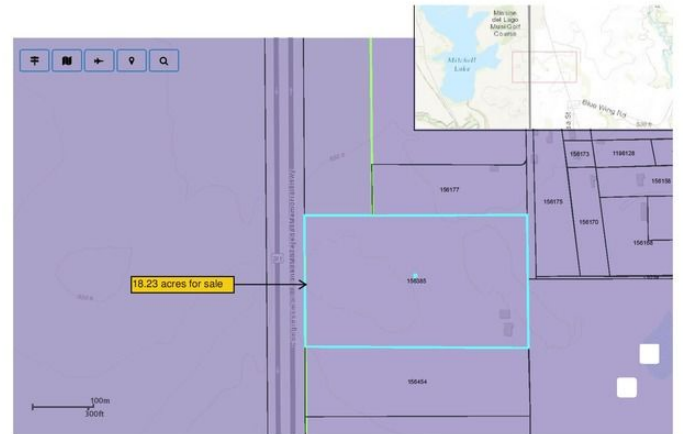
MLS® #	1249702
Price	\$1,184,950
Square Footage	794,099
Acres	18.23
Type	Lots and Acreage
Sub-Type	Other
Status	Active

Community Information

Address	14260 S Us Highway 281
Subdivision	N/A
City	San Antonio
County	Bexar
State	TX
Zip Code	78221

Amenities

Amenities	None
-----------	------



Utilities	Electric, Telephone
-----------	---------------------

Exterior

Lot Description	Partial Cleared, Wooded
-----------------	-------------------------

School Information

District	South Side ISD
----------	----------------

Elementary	Gallardo
------------	----------

Middle	Kingsborough
--------	--------------

High	Southside
------	-----------

Additional Information

Zoning	OCL
--------	-----

Listing Details

Listing Office	RE/MAX River Cities
----------------	---------------------

The data relating to real estate on this web site comes in part from the Internet Data Exchange program of the MLS of the San Antonio Board of Realtors®, and is updated as of September 10th, 2021 at 6:32pm CDT (date/time). IDX information is provided exclusively for consumers' personal, non-commercial use and may not be used for any purpose other than to identify prospective properties consumers may be interested in purchasing.