

\$6,970,000 - 10605 Hwy 71 East, Llano

MLS® #157028

\$6,970,000

5 Bedroom, 3.00 Bathroom, 2,800 sqft
Acreage / Farm / Ranch on 303.00 Acres

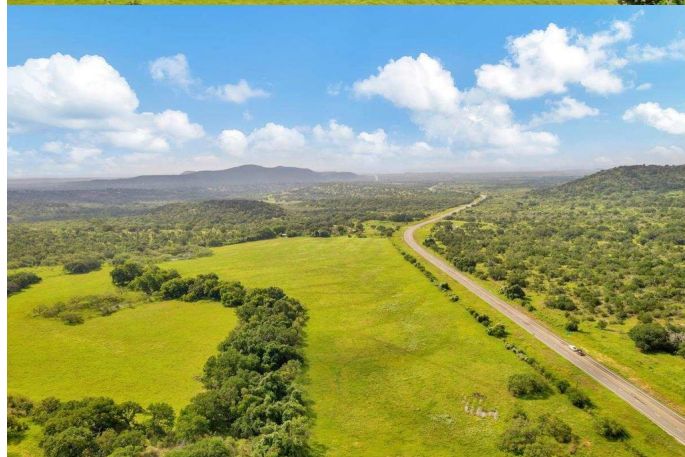
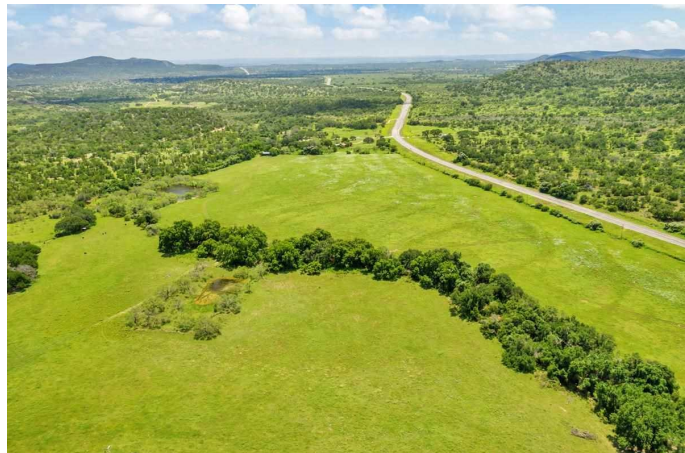
None, Llano, TX

No other ranch has been for sale on the HWY 71 East corridor such as this 300 acre land owned by the same family since 1852. This property truly defines the Texas Hill Country rich with abundant Artesian aquifer, improved grazing fields and sandstone rocks. Molasses Creek (spring fed) meanders throughout the entire ranch and has abundant native trees such as Pecan, Live Oak and Mustang Grape.

Property has multiple areas for viewing the Llano River, Highland Lakes to Packsaddle Mountain. Wells: 5 total with the Artesian as the current source for home/livestock and stock pond. Artesian was drilled in 1965 by Virdell at 250GPM. Hunting cabin on west side is approximately 1,000 sq. ft. White Rock house on east side is approximately 1,800 sq.ft

Essential Information

MLS® #	157028
Price	\$6,970,000
Bedrooms	5
Bathrooms	3.00
Full Baths	3
Square Footage	2,800
Acres	303.00
Type	Acreage / Farm / Ranch
Sub-Type	Acreage/Farm/Ranch
Status	Pending-Taking Backups



Community Information

Address	10605 Hwy 71 East
Area	Llano County SE
Subdivision	None
City	Llano
County	Llano
State	TX
Zip Code	78643

Amenities

Utilities	Electricity
View	Panoramic, Hill Country, Lake
Is Waterfront	Yes
Waterfront	Creek Seasonal

Interior

Cooling	Central
---------	---------

Exterior

Exterior	Stone
Lot Description	Cleared, Heavily Wooded, Level, Rocky, Rolling, Spring(s), View
Roof	Metal

School Information

District	Llano
----------	-------

Additional Information

Date Listed	July 29th, 2021
Days on Market	43

Listing Details

Listing Agent	Vicki Moore
Listing Office	McAlister Realty

The information being provided by the Highland Lakes Association of REALTORS, Inc. is exclusively for consumers' personal, non-commercial use, and it may not be used for any purpose other than to identify prospective properties consumers may be interested in purchasing. The data is deemed reliable but is not guaranteed accurate by the MLS.