

# \$150,000 - Lot 1 A Lakeshore Dr Drive, Horseshoe Bay

MLS® #155623

## \$150,000

Bedroom, Bathroom, 16,291 sqft  
Residential Lots on 0.37 Acres

Sandy Harbor, Horseshoe Bay, TX

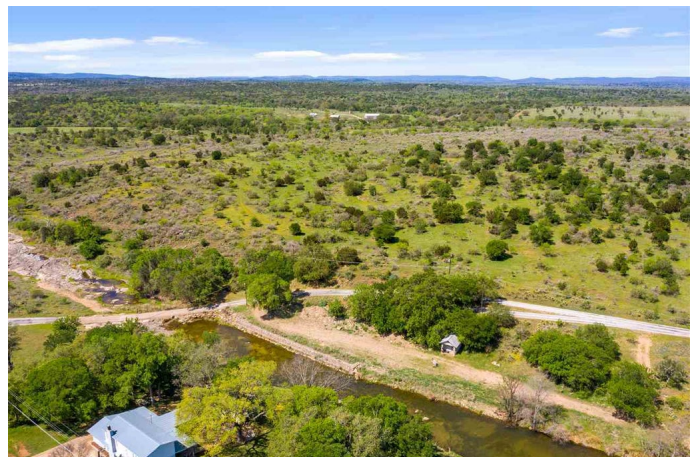
This beautiful waterfront lot has 229 feet on the scenic Walnut Creek branch of Lake LBJ. The shoreline has stepped rock bulkhead most of the length to preserve and protect the shoreline. The shallow lake water is perfect for kayaking, paddle-boarding and sunning but you don't have to worry about big, noisy powerboats. The property features several stately trees, dramatic rocky outcrops and a large, barely sloping pad-site/lawn area. Water and power are available street-side.

## Essential Information

MLS® #	155623
Price	\$150,000
Square Footage	16,291
Acres	0.37
Type	Residential Lots
Sub-Type	Lots (Up to 9.9 Acres)
Status	Active

## Community Information

Address	Lot 1 A Lakeshore Dr Drive
Area	BLake, DHvn, SHbr, Oakrdg
Subdivision	Sandy Harbor
City	Horseshoe Bay
County	Llano
State	TX
Zip Code	78657



## Amenities

Amenities	Homeowner Park, Water Access
Utilities	City Sewer, City Water, Electricity
View	Lake
Is Waterfront	Yes
Waterfront	Lake

## School Information

District	Llano
----------	-------

## Additional Information

Date Listed	April 13th, 2021
Days on Market	150
Foreclosure	Yes
RE / Bank Owned	Yes

## Listing Details

Listing Agent	Katie Johnson
Listing Office	Lake Life Team-eXp Realty

The information being provided by the Highland Lakes Association of REALTORS, Inc. is exclusively for consumers' personal, non-commercial use, and it may not be used for any purpose other than to identify prospective properties consumers may be interested in purchasing. The data is deemed reliable but is not guaranteed accurate by the MLS.