

# \$420,000 - 125 Elderberry Drive, Salado

MLS® #565328

## \$420,000

3 Bedroom, 2.00 Bathroom, 1,850 sqft  
Residential on 0.15 Acres

Sanctuary, Salado, Texas

The well-designed Comanche plan offers three bedrooms, two full bathrooms & a private study room!

Built in 2024

## Essential Information

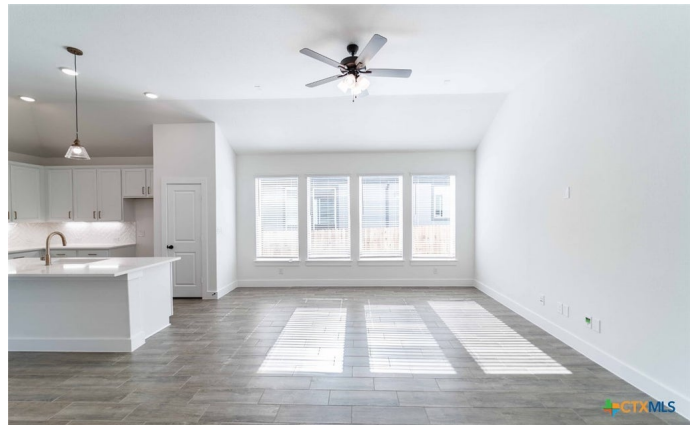
MLS® #	565328
Price	\$420,000
Bedrooms	3
Bathrooms	2.00
Full Baths	2
Square Footage	1,850
Acres	0.15
Year Built	2024
Type	Residential
Sub-Type	Single Family
Style	Contemporary/Modern
Status	Active

## Community Information

Address	125 Elderberry Drive
Subdivision	Sanctuary
City	Salado
County	Bell
State	Texas
Zip Code	76571

## Amenities

Utilities Water Available, Cable Available, Electricity Available, Trash Collection



	Public, Underground Utilities
Features	Playground, Sidewalks, Street Lights
Parking	Attached, Garage, Garage Faces Front
# of Garages	2
View	None

### **Interior**

Interior	Carpet, Ceramic Tile, Wood
Appliances	Cooktop, Dishwasher, Disposal, Electric Cooktop, Electric Water Heater, Microwave, Some Electric Appliances, Vented Exhaust Fan, Wine Refrigerator
Heating	Electric
Cooling	Central Air, Electric, OneUnit
Fireplaces	None
# of Stories	2
Stories	Two

### **Exterior**

Exterior Features	Covered Patio, Rain Gutters
Roof	Composition, Shingle
Construction	Batts Insulation, HardiPlank Type, Masonry
Foundation	Slab

### **School Information**

District	Salado ISD
Elementary	Thomas Arnold Elementary
Middle	Salado Junior High
High	Salado High School

### **Additional Information**

Date Listed	December 26th, 2024
Days on Market	348
HOA Fees	50
HOA Fees Freq.	Monthly

### **Listing Details**

Listing Office	CastleRock Realty, LLC
----------------	------------------------

The information being provided by the Central Texas MLS is exclusively for consumers' personal, non-commercial use, and it may not be used for any purpose other than to identify prospective properties consumers may be interested in purchasing. The data is deemed reliable but is not guaranteed accurate by the MLS.