

# \$289,000 - 8522 Glade Drive, Temple

MLS® #545193

## \$289,000

3 Bedroom, 2.00 Bathroom, 1,505 sqft  
Residential on 0.12 Acres

Mesa Ridge Phase II, Temple, Texas

All around great floorplan! Big great room with crown molding, custom cabinets, granite/quartz counters. Stainless appliances, ceramic tile flooring, beamed ceiling. Buyer may still choose flooring, cabinet color, paint color, tile for kitchen backsplash and bathrooms. Builder is making a fairly large contribution for your closing costs as well as paying for title policy and survey. Sprinkler, grass and privacy fence are included in this price, along with foundation plantings and a tree. Call for more info!

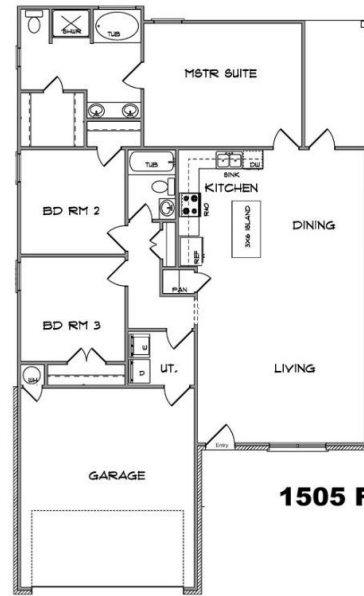
Built in 2024

## Essential Information

MLS® #	545193
Price	\$289,000
Bedrooms	3
Bathrooms	2.00
Full Baths	2
Square Footage	1,505
Acres	0.12
Year Built	2024
Type	Residential
Sub-Type	Single Family
Style	Ranch, Traditional
Status	Active

## Community Information

Address 8522 Glade Drive



1505 Floorplan



Subdivision	Mesa Ridge Phase II
City	Temple
County	Bell
State	Texas
Zip Code	76502

### **Amenities**

Utilities	Phone Available, Trash Collection Public, Underground Utilities
Features	None
# of Garages	2
View	None

### **Interior**

Interior	Carpet, Ceramic Tile
Appliances	Dishwasher, Electric Range, Electric Water Heater, Disposal, Plumbed For Ice Maker, Water Heater, Some Electric Appliances, Microwave, Range
Heating	Central, Electric, Heat Pump
Cooling	Central Air, Electric, Heat Pump, 1 Unit
Fireplaces	None
# of Stories	1
Stories	One

### **Exterior**

Exterior Features	Covered Patio, Porch
Windows	Double Pane Windows
Roof	Composition, Shingle
Construction	Batts Insulation, Blown-In Insulation, Brick Veneer, Fiber Cement, Masonry, Stone Veneer
Foundation	Slab

### **School Information**

District	Belton ISD
Middle	Lake Belton Middle School
High	Lake Belton High School

### **Additional Information**

Date Listed	June 4th, 2024
-------------	----------------

### **Listing Details**

Listing Office

Coldwell Banker Realty

The information being provided by the Central Texas MLS is exclusively for consumers' personal, non-commercial use, and it may not be used for any purpose other than to identify prospective properties consumers may be interested in purchasing. The data is deemed reliable but is not guaranteed accurate by the MLS.