

\$546,240 - 11404 Comano Drive, Austin

MLS® #474259

\$546,240

3 Bedroom, 2.00 Bathroom, 1,754 sqft
Residential on 0.18 Acres

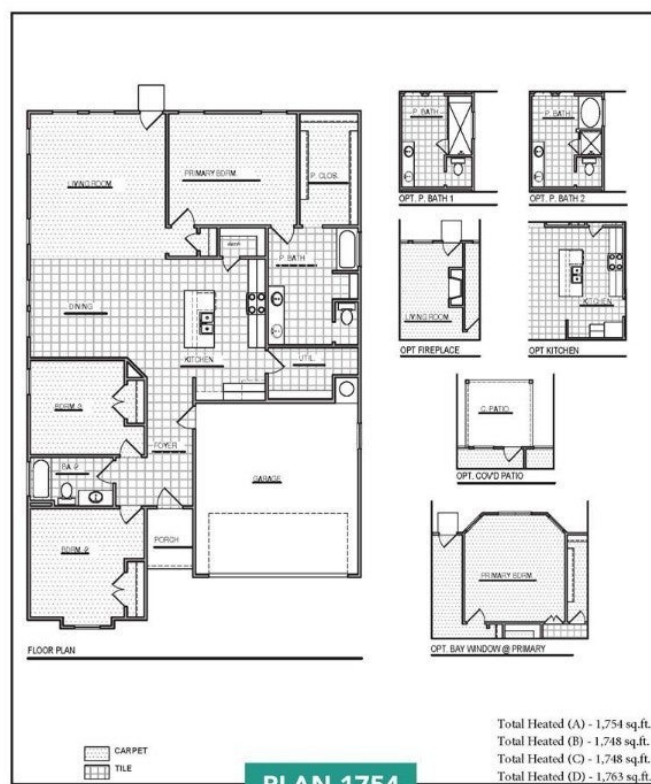
Cloverleaf, Austin, Texas

MLS# 474259 - Built by Brohn Homes - December completion! ~ This beautiful one story home is an open floor plan concept. Lots of windows and natural light. The kitchen is spacious with plenty of cabinets and counter space. It also features white 42 upper cabinets, white quartz countertops, stainless steel appliance and a large island. A Garden tub, separate shower, quartz countertops and double vanity are in the primary bathroom. And a huge walk-in closet! Wood-like tile through-out the common areas of the home for easy maintenance. Cloverleaf community is just 11 miles southeast of downtown Austin. Low tax rate and great location!!

Built in 2022

Essential Information

MLS® #	474259
Price	\$546,240
Bedrooms	3
Bathrooms	2.00
Full Baths	2
Square Footage	1,754
Acres	0.18
Year Built	2022
Type	Residential
Sub-Type	Single Family
Style	Traditional
Status	Active



Clayton Properties Group, Inc. Formerly known and Qualified to do business in Texas as CMH Parks Inc. DBA Brohn Homes reserves the right to make changes to pricing, floor plans, specifications, features, dimensions, elevations, and incentives without prior notice. Stated dimensions and approximate and should not be used as representation of the home's precise or actual size. Copyright © 2014 Clayton Properties Group and Qualified to do business in Texas as CMH Parks Inc. DBA Brohn Homes.



Community Information

Address	11404 Comano Drive
Subdivision	Cloverleaf
City	Austin
County	Travis
State	Texas
Zip Code	78747

Amenities

Utilities	Natural Gas Available, Natural Gas Connected
Features	Park
Parking	Attached, Garage
# of Garages	2
View	None

Interior

Interior	Carpet
Interior Features	Carbon Monoxide Detector, Double Vanity, Garden Tub/Roman Tub, Open Floorplan, Recessed Lighting, Separate Shower, Kitchen Island
Appliances	Dishwasher, Disposal, Gas Range, Gas Water Heater, Microwave, Oven, Plumbed For Ice Maker
Heating	Central
Cooling	Central Air
Fireplaces	None
# of Stories	1
Stories	One

Exterior

Exterior Features	Covered Patio, Private Yard
Lot Description	120X50
Roof	Composition, Shingle, Wood
Construction	HardiPlank Type
Foundation	Slab

School Information

District	Austin ISD
Elementary	Blazier Elementary School
Middle	Paredes Middle School
High	Akins High School

Additional Information

Date Listed	June 3rd, 2022
Days on Market	27
HOA Fees	100.00
HOA Fees Freq.	Quarterly

Listing Details

Listing Office	HomesUSA.com
----------------	--------------

The information being provided by the Central Texas MLS is exclusively for consumers' personal, non-commercial use, and it may not be used for any purpose other than to identify prospective properties consumers may be interested in purchasing. The data is deemed reliable but is not guaranteed accurate by the MLS.