

\$649,900 - 28406 Shailene Drive, San Antonio

MLS® #472458

\$649,900

4 Bedroom, 3.00 Bathroom, 2,504 sqft
Residential on 0.15 Acres

Kinder Ranch, San Antonio, Texas

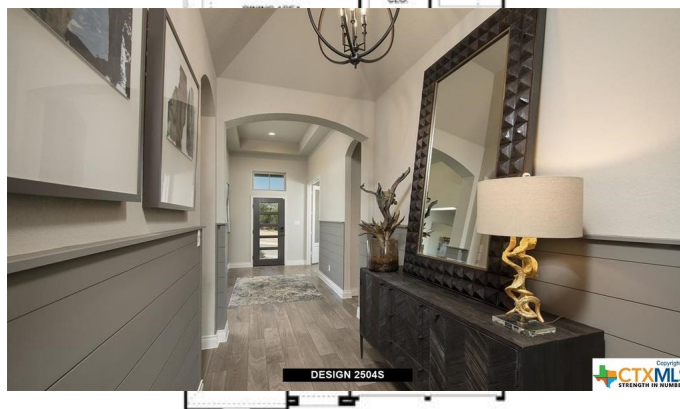
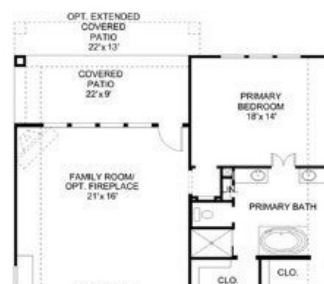
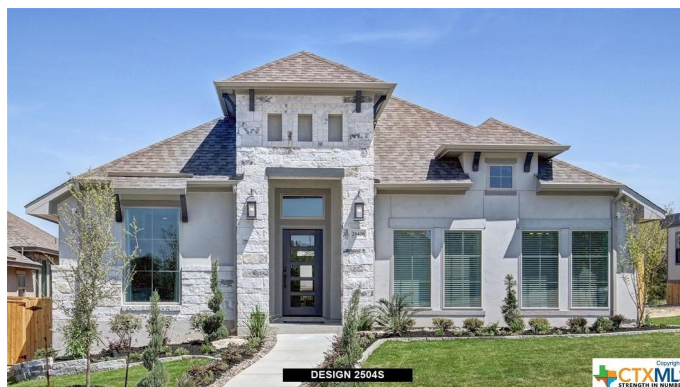
PERRY HOMES NEW CONSTRUCTION!

Former model home. Library with French doors and ceramic tile floor set at the entry. Kitchen features an island with built-in seating space. Dining area flows into the family room with ceramic tile floor, a wall of windows and fireplace. Master bedroom with three large windows. Double doors lead to master bath with dual vanities, separate glass enclosed shower, garden tub, and two large walk-in closets. Guest suite with a full bath and a walk-in closet. Model home upgrades include accent paint, drapes, alarm system, sprinkler system, and additional landscaping. Extended covered backyard patio. Two-car garage.

Built in 2019

Essential Information

MLS® #	472458
Price	\$649,900
Bedrooms	4
Bathrooms	3.00
Full Baths	3
Square Footage	2,504
Acres	0.15
Year Built	2019
Type	Residential
Sub-Type	Single Family
Style	Hill Country, Traditional
Status	Pending



*See Page 3 for Details and Disclaimers | © Perry Homes, LLC 2023 | 4/30/23 4:30:31 PM | 057 CLJ
PerryHomes.com



Community Information

Address	28406 Shailene Drive
Subdivision	Kinder Ranch
City	San Antonio
County	Comal
State	Texas
Zip Code	78260

Amenities

Utilities	Cable Available, High Speed Internet Available
Features	Clubhouse, Playground, Park, Trails/Paths, Community Pool, Curbs, Sidewalks, Gutter(s), Sport Court(s), Street Lights
Parking	Attached, Garage
# of Garages	2
Garages	Garage Door Opener
View	None, Other

Interior

Interior	Carpet, Ceramic Tile
Interior Features	Ceiling Fan(s), Carbon Monoxide Detector, Home Office, Open Floorplan, Pull Down Attic Stairs, Eat-in Kitchen, Kitchen Island, Pantry
Appliances	Dishwasher, Disposal, Microwave, Tankless Water Heater, Some Gas Appliances, Built-In Oven, Cooktop, Down Draft
Heating	Central, Natural Gas
Cooling	Central Air, 1 Unit
# of Fireplaces	1
Fireplaces	None
# of Stories	1
Stories	One

Exterior

Exterior Features	Covered Patio, Rain Gutters, Deck
Lot Description	50x130
Roof	Composition, Shingle
Construction	Masonry, Stone Veneer, Stucco
Foundation	Slab

School Information

District	Comal ISD
----------	-----------

Elementary	Kinder Ranch Elementary
Middle	Pieper Middle School
High	Smithson Valley

Additional Information

Date Listed	May 19th, 2022
Days on Market	58
HOA Fees	974.76
HOA Fees Freq.	Annually

Listing Details

Listing Office	Perry Development Mgt.
----------------	------------------------

The information being provided by the Central Texas MLS is exclusively for consumers' personal, non-commercial use, and it may not be used for any purpose other than to identify prospective properties consumers may be interested in purchasing. The data is deemed reliable but is not guaranteed accurate by the MLS.