

\$230,000 - 9019 Single Bend Trail, Temple

MLS® #450546

\$230,000

3 Bedroom, 3.00 Bathroom, 2,080 sqft
Residential on 0.13 Acres

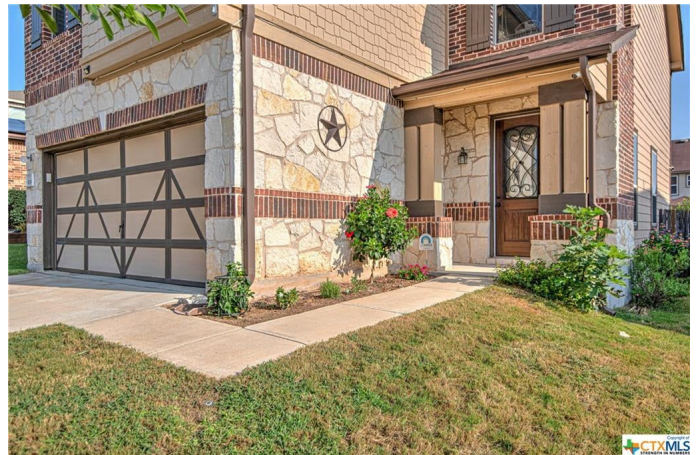
Village Of Sage Meadows Ph, Temple, Texas

Belton ISD! This spacious 3 Bedroom, 2.5 Bathroom home is close to schools, Belton Lake, shopping, medical facilities, and shopping. Downstairs you will find a living room, eat-in kitchen with stainless steel appliances, granite countertops, pantry, and a laundry room with storage. Head upstairs to your second living room/flex space. You'll also enjoy the inviting entry to your master suite that features a sitting area, garden tub, double vanity, separate shower and spacious walk-in closet. Upstairs also includes 2 other spacious bedrooms and a full bathroom. Step out back to your covered patio.

Built in 2014

Essential Information

MLS® #	450546
Price	\$230,000
Bedrooms	3
Bathrooms	3.00
Full Baths	2
Half Baths	1
Square Footage	2,080
Acres	0.13
Year Built	2014
Type	Residential
Sub-Type	Single Family
Style	Traditional
Status	Pending



Community Information

Address	9019 Single Bend Trail
Subdivision	Village Of Sage Meadows Ph
City	Temple
County	Bell
State	Texas
Zip Code	76502

Amenities

Utilities	High Speed Internet Available
Features	None, Sidewalks, Curbs
Parking	Attached, Garage, Garage Faces Front
# of Garages	2
View	None

Interior

Interior	Carpet, Tile, Laminate, Vinyl
Interior Features	Ceiling Fan(s), Double Vanity, Separate Shower, Eat-in Kitchen, Pantry, Breakfast Area, Game Room, Garden Tub/Roman Tub
Appliances	Dishwasher, Electric Water Heater, Disposal, Microwave, Refrigerator, Water Heater, Dryer, Range, Washer
Heating	Central, Electric
Cooling	Central Air, Electric, 1 Unit
Fireplaces	None, Fire Pit
# of Stories	2
Stories	Two

Exterior

Exterior Features	Covered Patio, Deck, Fire Pit, Rain Gutters
Lot Description	46.89 X 122.67
Roof	Composition, Shingle
Construction	Masonry, Stone Veneer, HardiPlank Type
Foundation	Slab

School Information

District	Belton ISD
Elementary	Pirtle Elementary
Middle	Lake Belton Middle School
High	Lake Belton High School

Additional Information

Date Listed	September 2nd, 2021
Days on Market	4
HOA Fees	265.00
HOA Fees Freq.	Annually

Listing Details

Listing Office	RE/MAX TEMPLE-BELTON
----------------	----------------------

The information being provided by the Central Texas MLS is exclusively for consumers' personal, non-commercial use, and it may not be used for any purpose other than to identify prospective properties consumers may be interested in purchasing. The data is deemed reliable but is not guaranteed accurate by the MLS.